



Presentation to FTA Revenue Estimating Conference: Due Date Shifts during the Pandemic

Amy Gill, Deputy Secretary for Tax Policy
Pennsylvania Department of Revenue





Crucial Due Date Shifts

- PIT Return, Estimated, and Annual Payments –
 - Delayed from April 15th and June 15th to July 15th
- CNIT Return and Annual Payment –
 - Delayed from April - July 15 to August 15
 - Estimated payments due March 15 and June 15 were NOT delayed
- Waived Accelerated Sales Tax Payments
 - Waived for March, April, May and June



Forecasting Issues

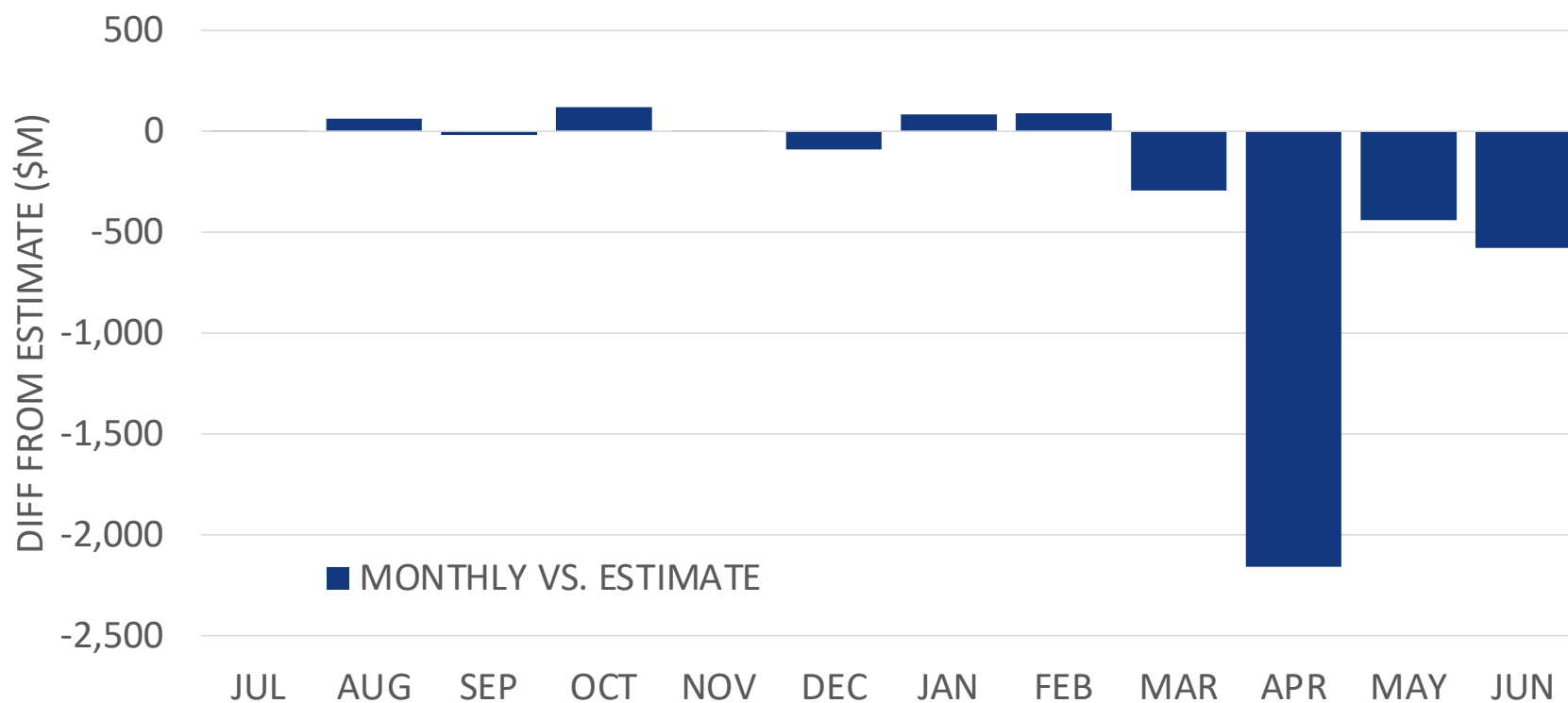
Three Main Issues:

- Shift of Due Dates / Convert Cash to Base
- Economic Data Syncing up with tax collections
- Processing Issues



Due Dates Shift, Forecasting, and Effect on Revenues

2019-20 – General Fund Total

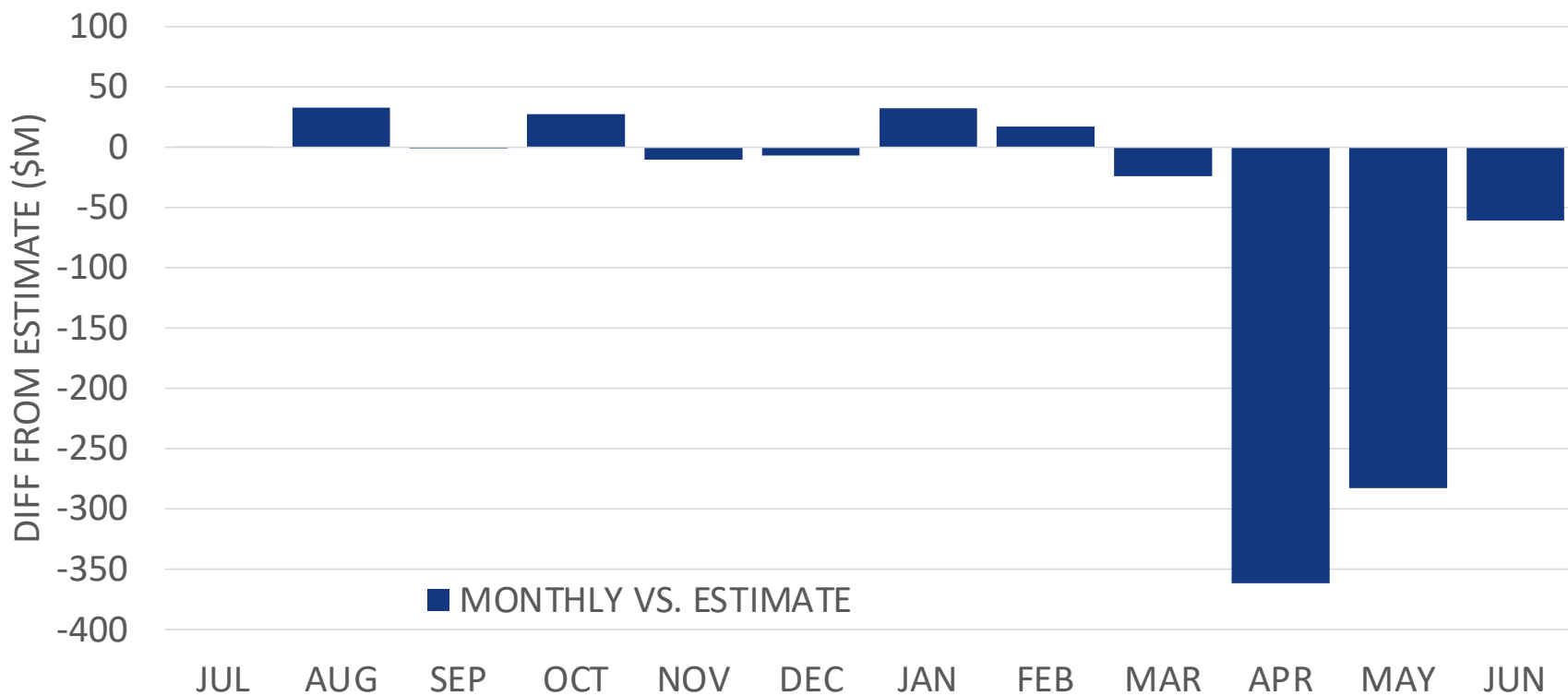




SUT Accelerated Sales Tax Payments

- Businesses that have a SUT tax liability greater than \$100,000 for the third quarter of the prior year must make a prepayment of 50% of that month's liability from the prior year.
- Between \$25,000 and \$100,000 SUT tax liability for the third quarter of the prior year must make a prepayment of 50% of that month's liability from the prior tax year or 50% of the current month.
- The prepayments are significant to the total month's revenues – they can typically be 40% of a month's receipts.

2019-20 – Sales & Use Tax

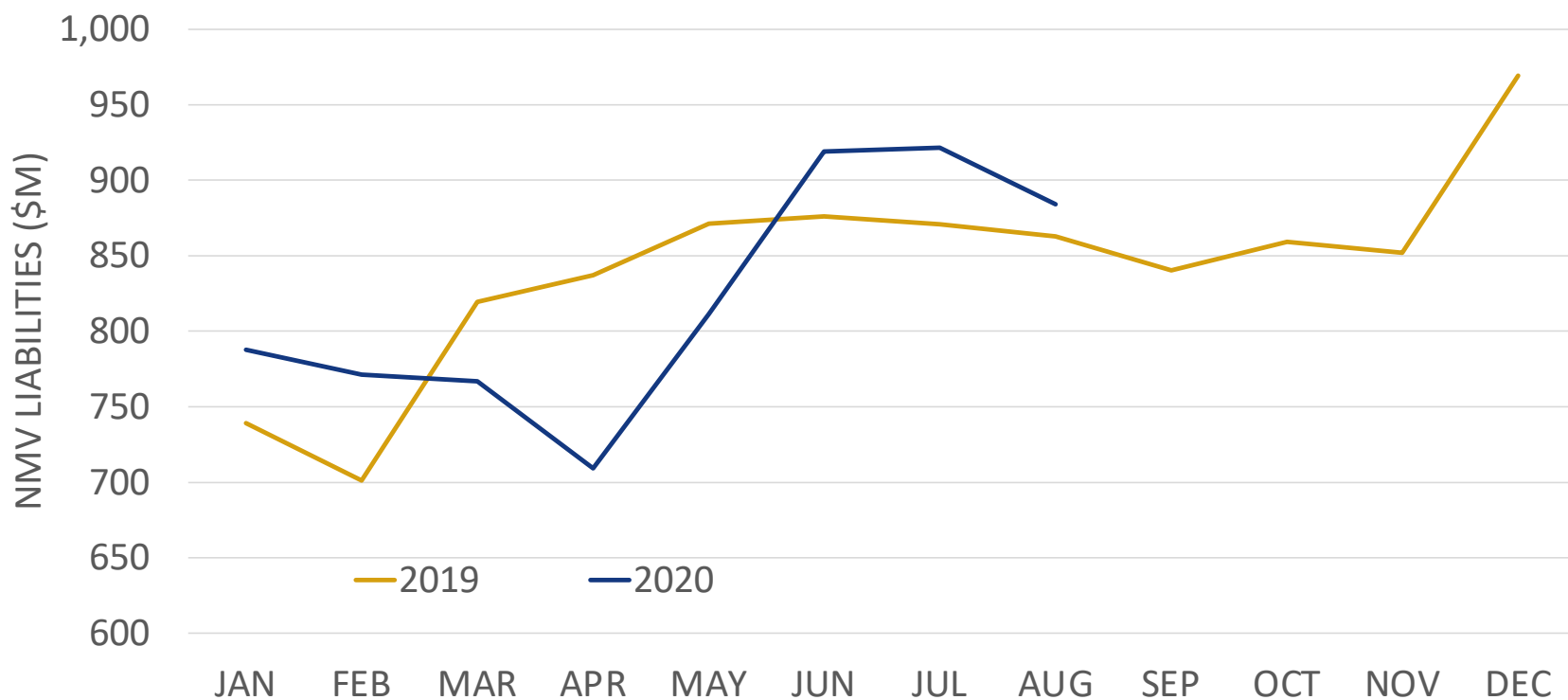




SUT – Forecasting Issues

		Cash	AST	Pre-Base	E-Commerce	Base
APR	2020	681	136	817	82	735
MAY	2020	685	203	888	102	786
JUN	2020	853	56	909	115	794
JUL	2020	1,120	-191	929	121	807
AUG	2020	942	0	942	112	830

2020-21 – Sales & Use Tax





2020-21 – Sales & Use Tax

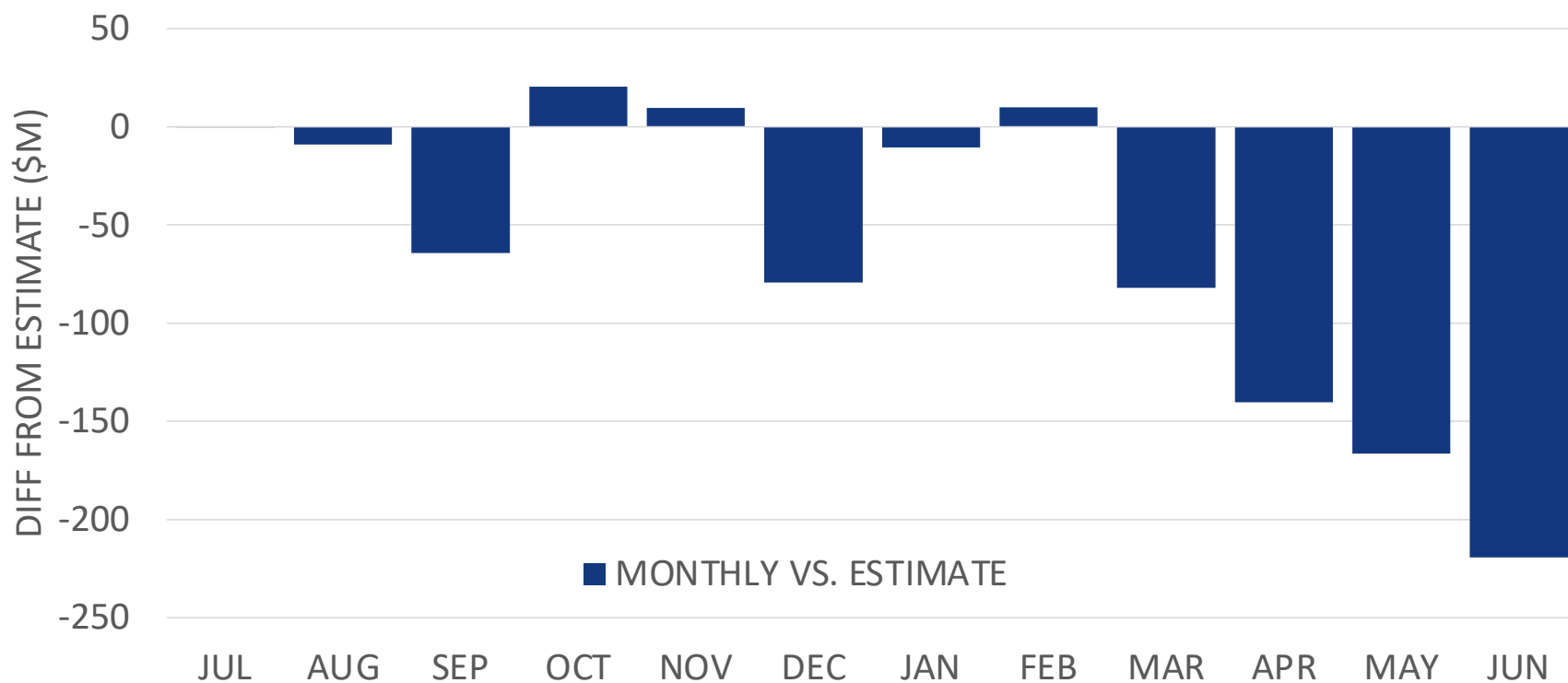
POSITIVES

- FEDERAL STIMULUS PAYMENTS
- \$600 UC BENEFITS PLUS PUA
- STAYCATION SPENDING
- PENT-UP DEMAND FOR MOTOR VEHICLES

NEGATIVES

- TRAVEL RESTRICTIONS
- LIMITS ON RESTAURANT/BAR CAPACITY
- HIGH UNEMPLOYMENT

2019-20 – Corporate Net Income Tax

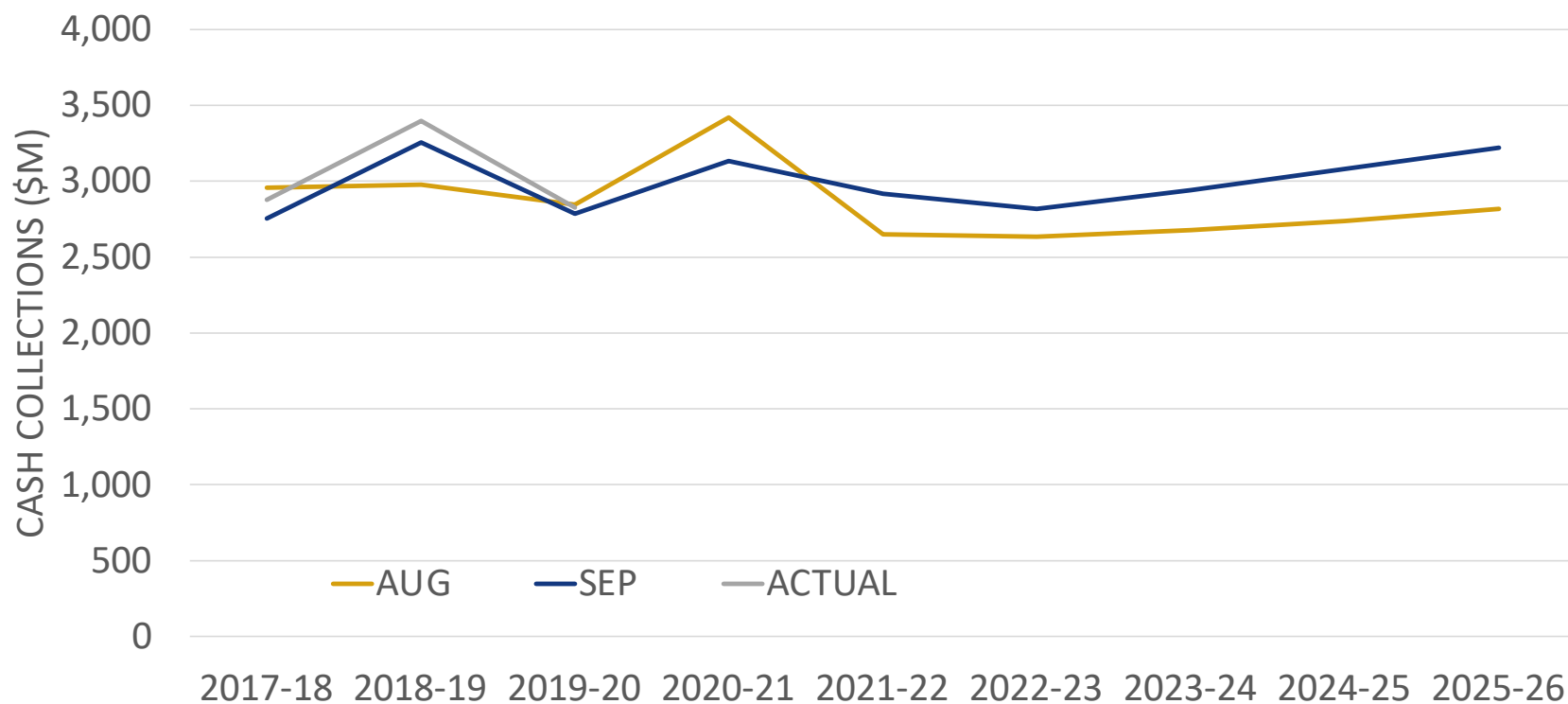




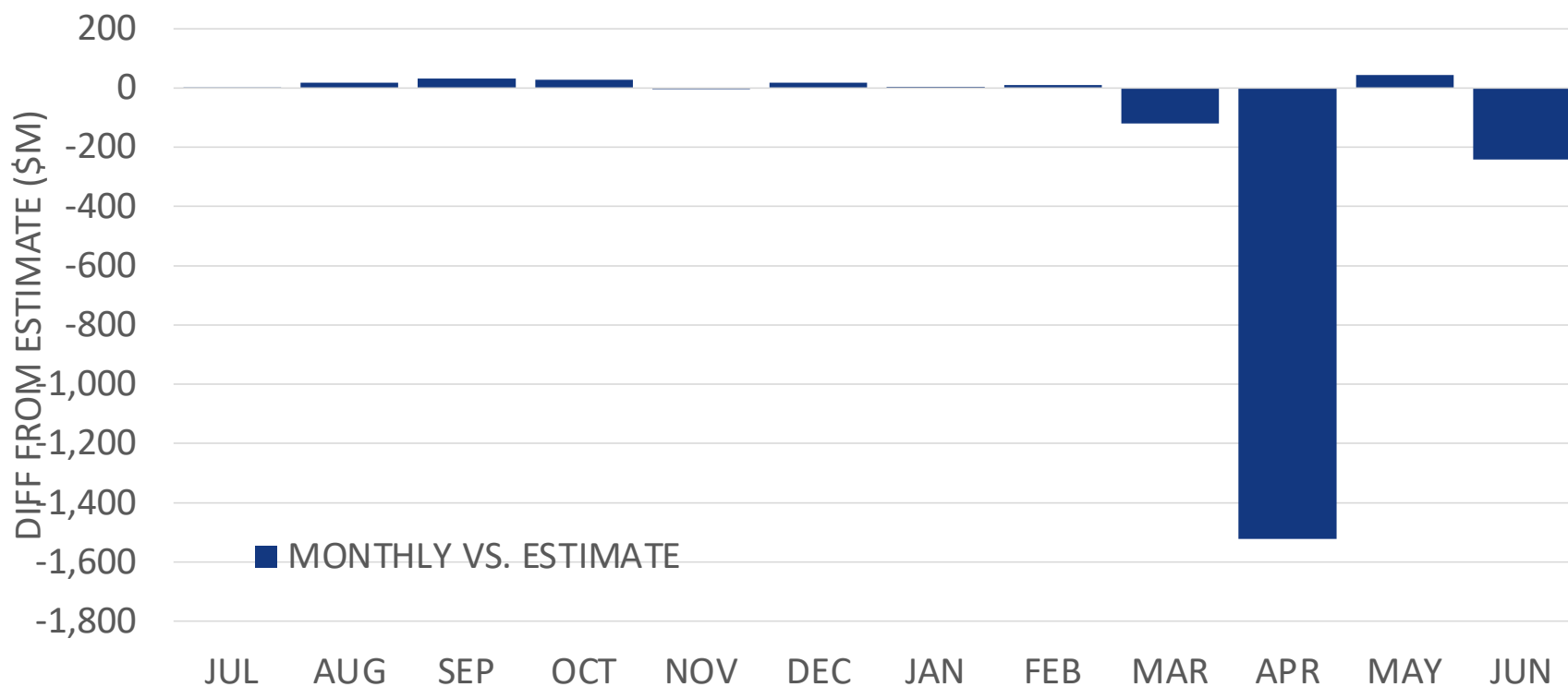
CNIT Forecasting

- Payments were shifted from April through July to August 15th
- The bulk of the payments would have been received in May

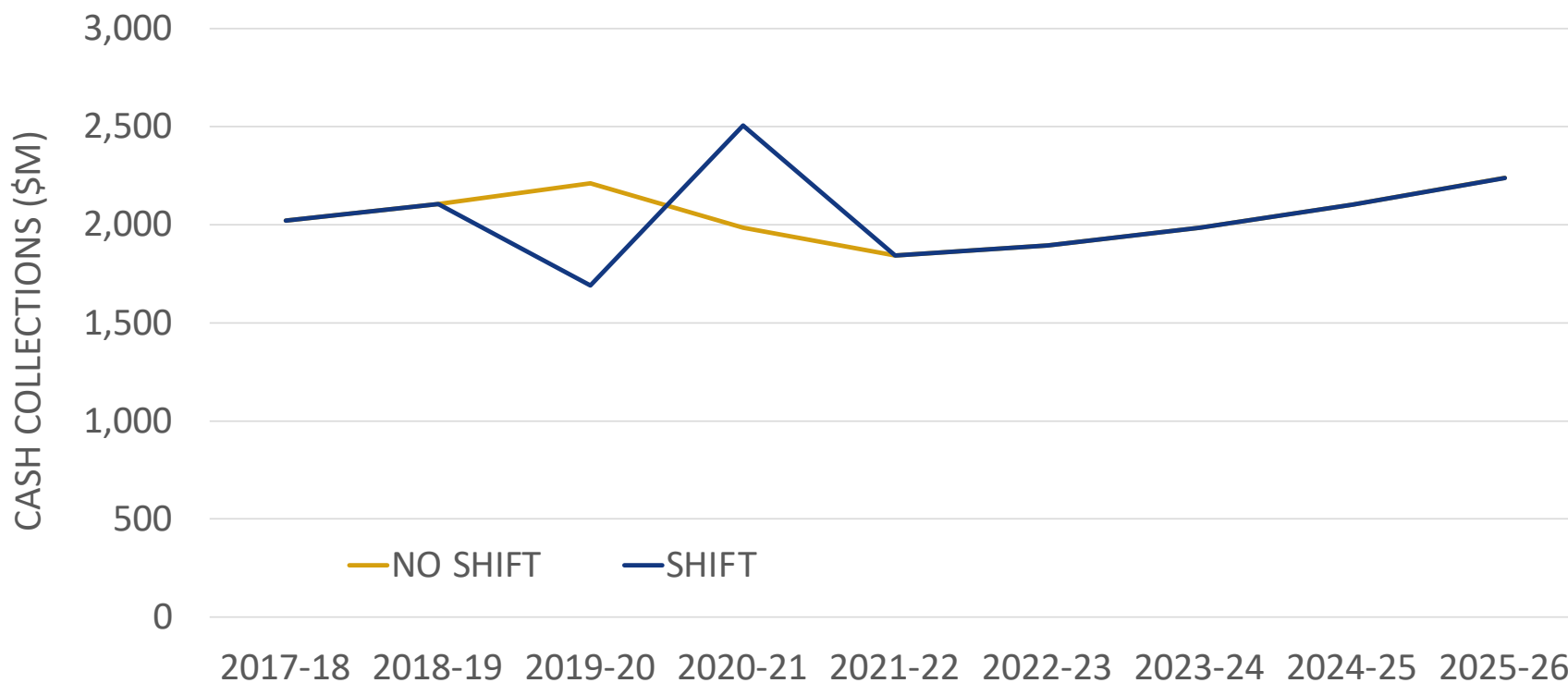
2020-21 – Corporate Net Income Tax



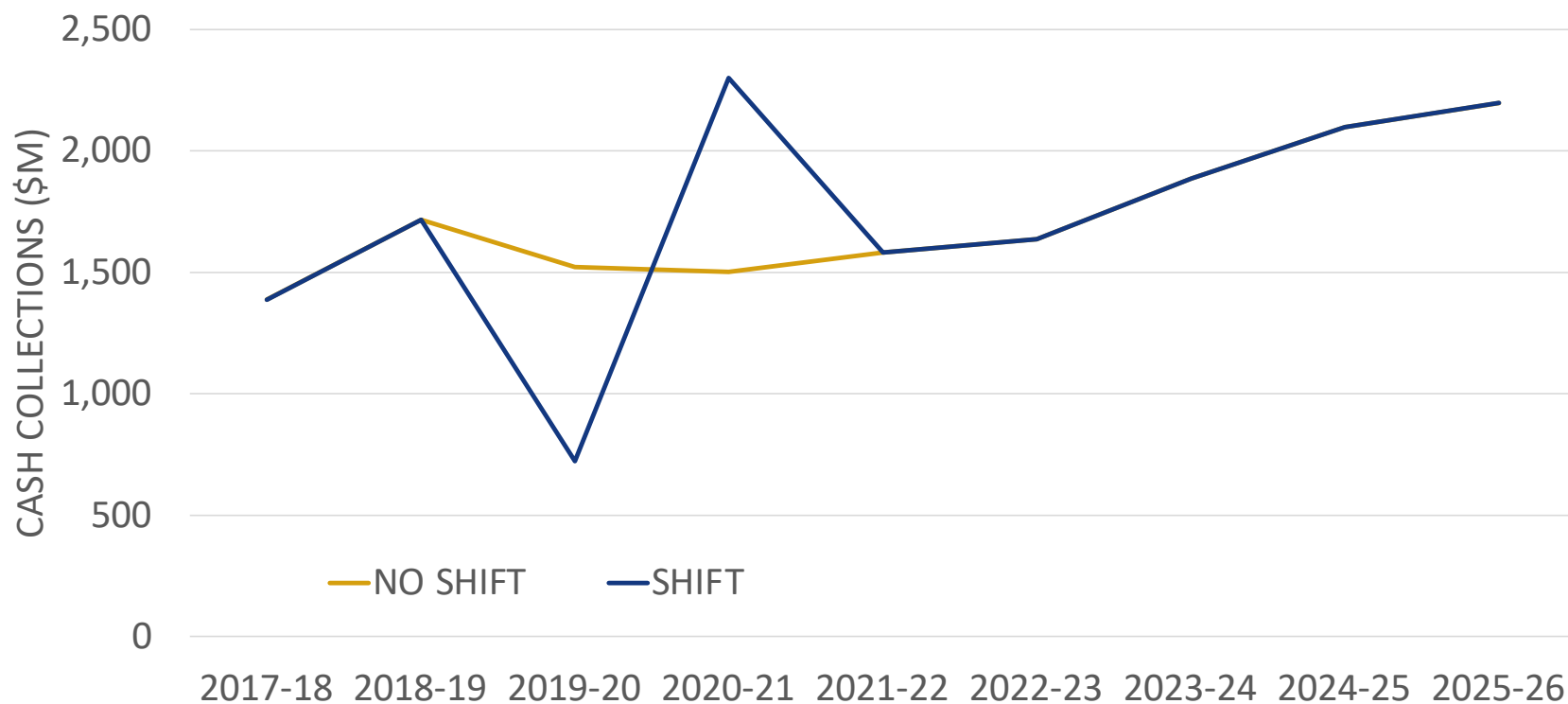
2019-20 – Personal Income Tax



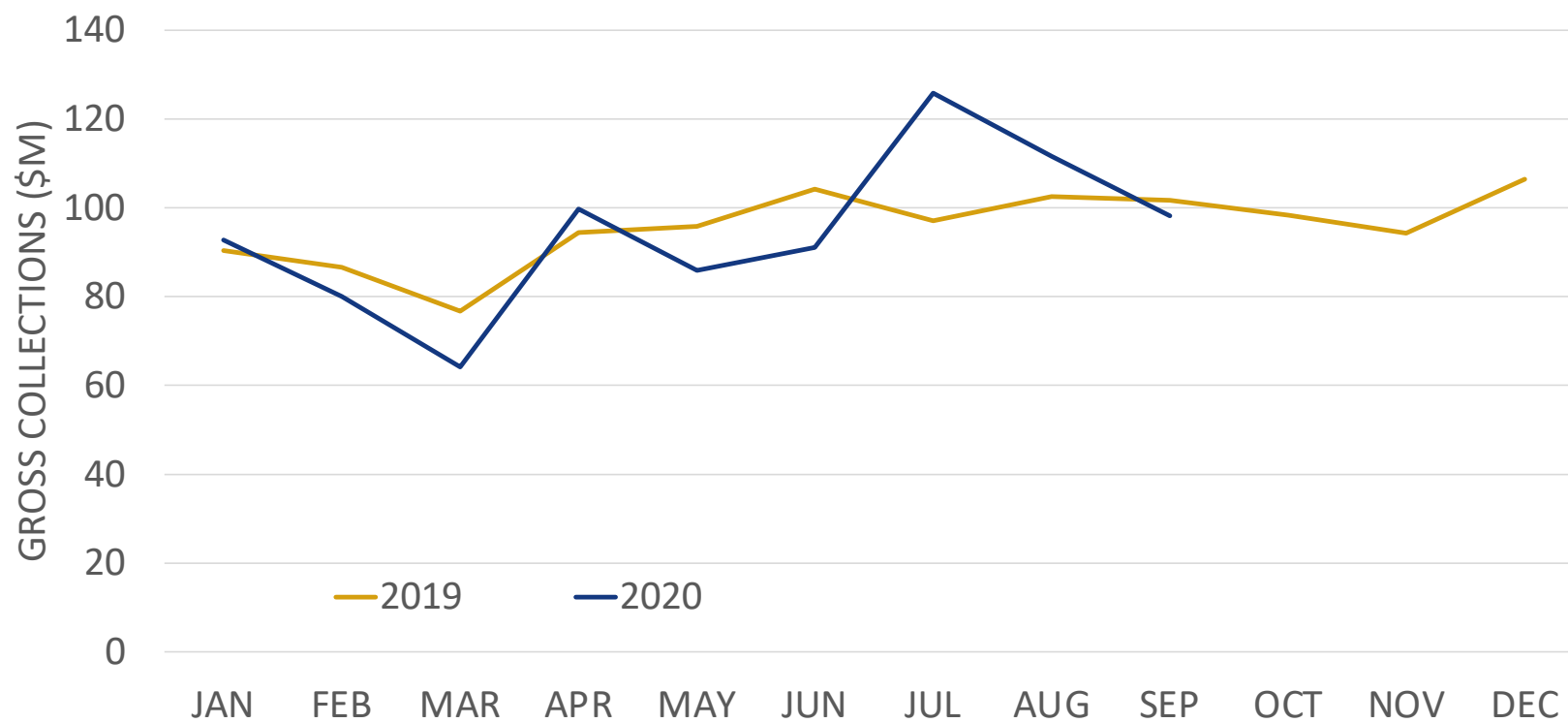
2019-20 – PIT Quarterlies



2019-20 – PIT Annuals



2020-21 – Cigarette Tax





Questions?