

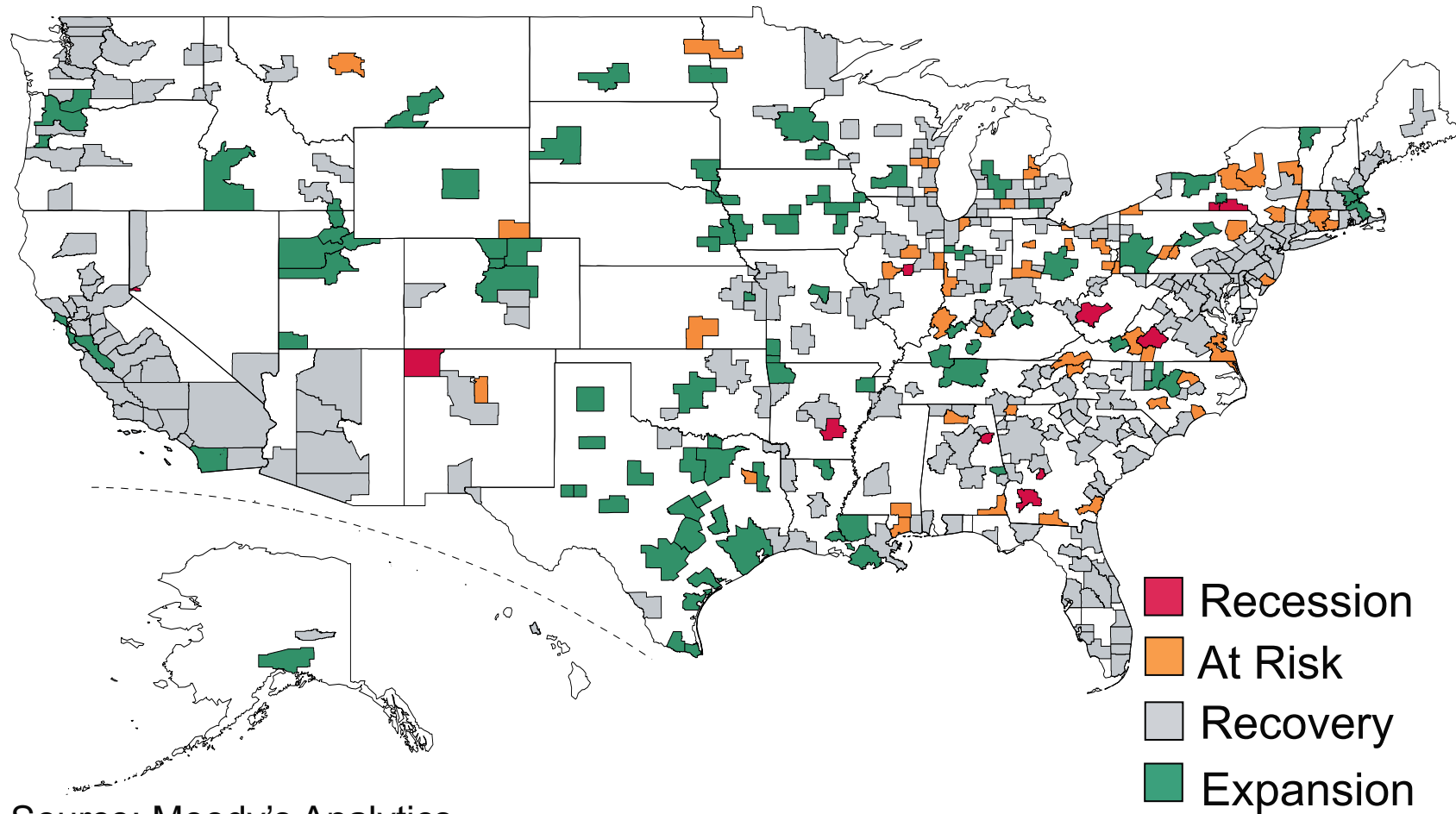


The Regional Outlook

MARISA DI NATALE, SENIOR DIRECTOR

Economic Recovery Is Widespread

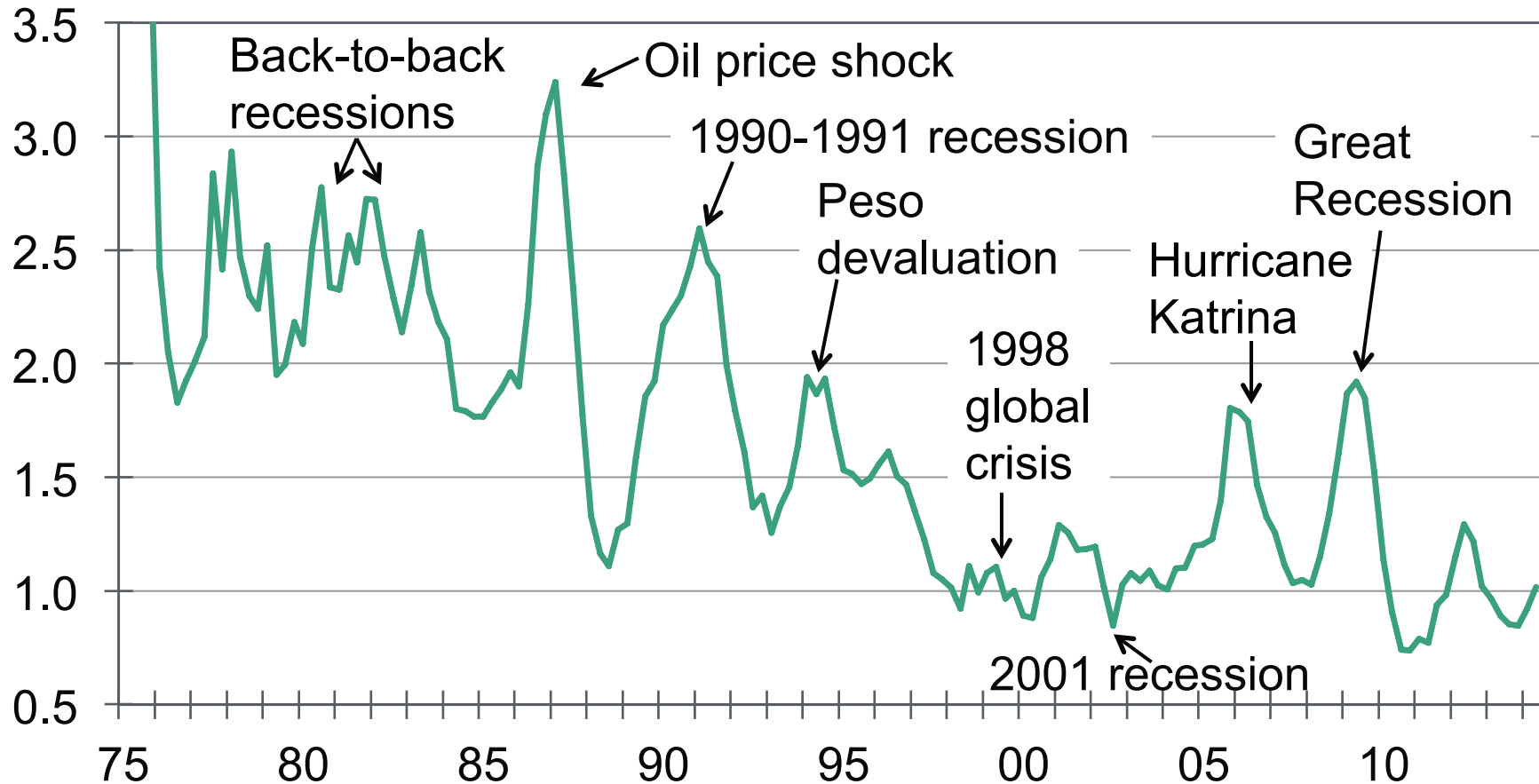
Business Cycle Index, June 2014, by metropolitan area



Source: Moody's Analytics

A Record Even Distribution of Job Growth

Standard deviation of quarterly yr-to-yr state job growth rates

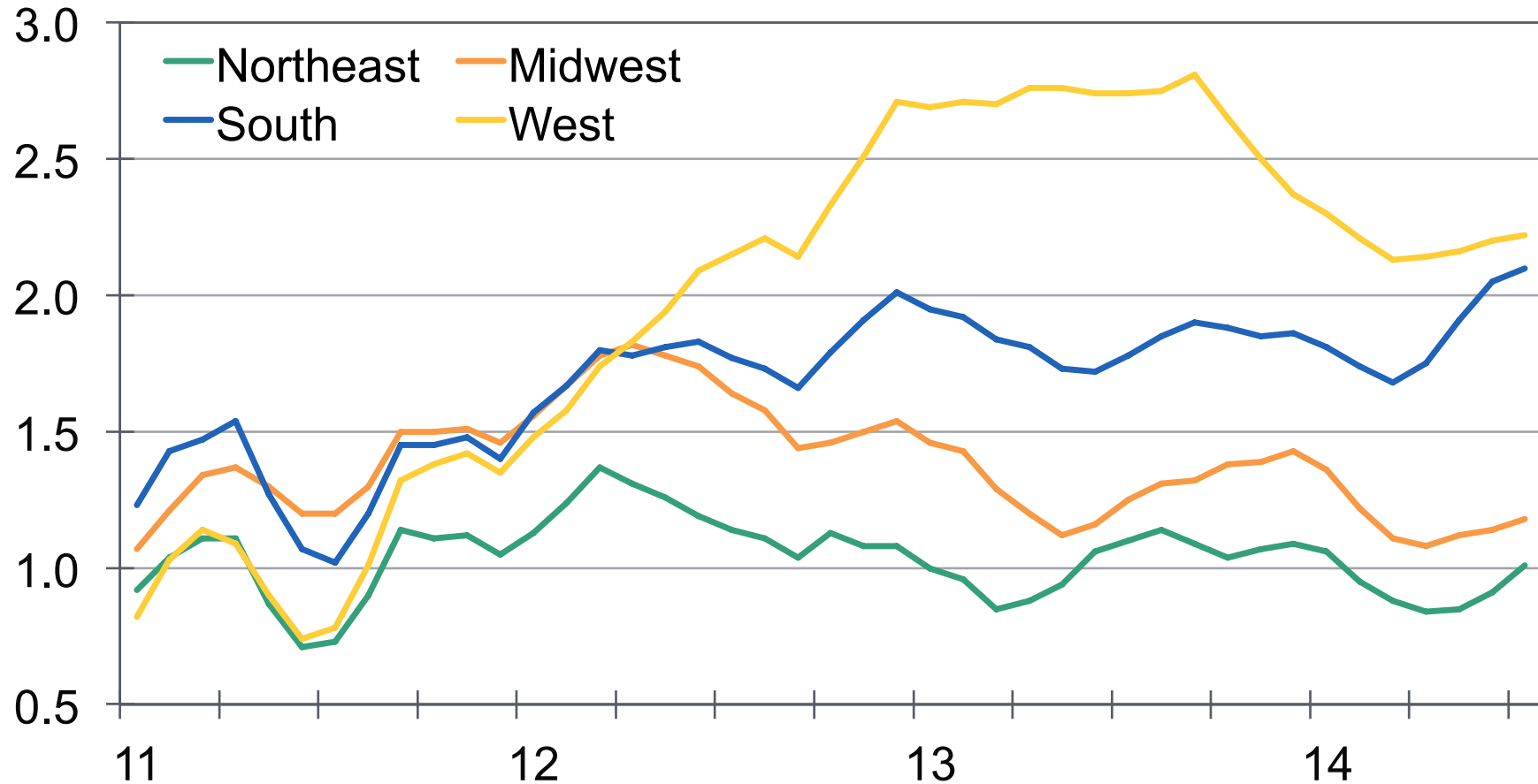


Sources: BLS, Moody's Analytics

Data through 2014Q2

West and South Regain Traditional Lead

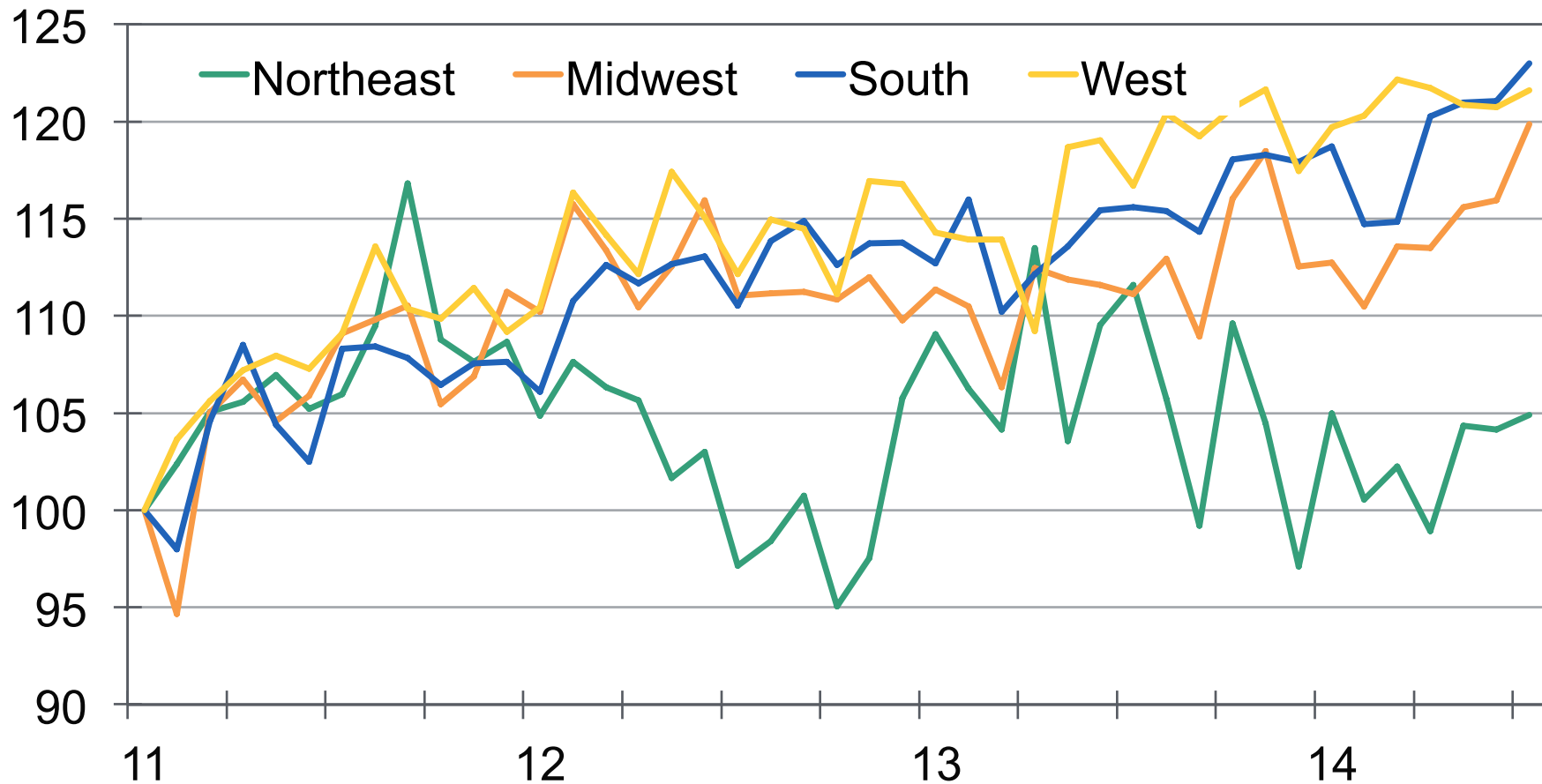
Employment, 3-mo MA, % change yr ago



Sources: BLS, Moody's Analytics

International Trade Makes a Difference

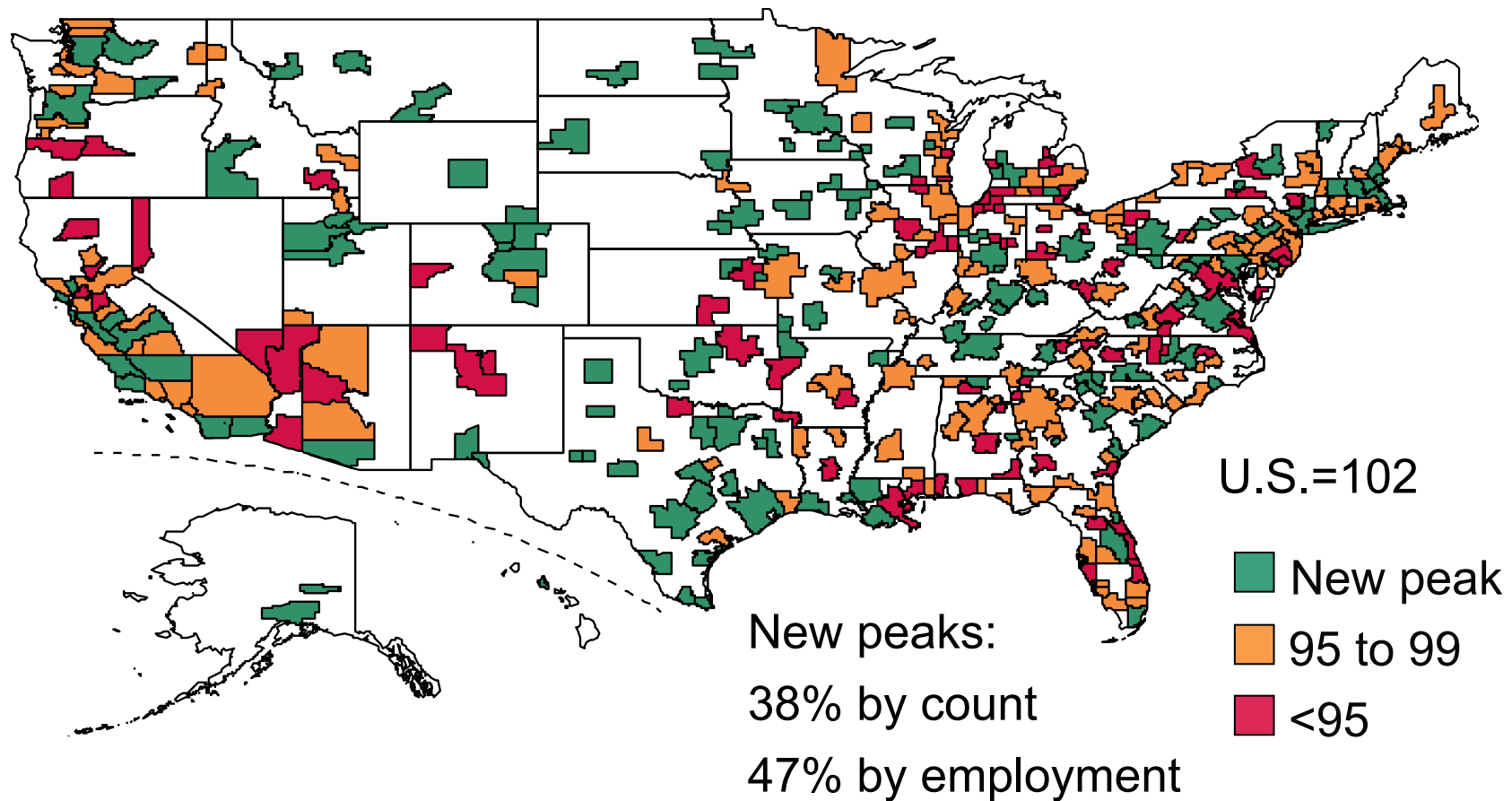
Exports of goods and commodities, nominal value, Jan 11=100



Sources: Census Bureau-Foreign Trade Division, Moody's Analytics

New Employment Peaks Spread From Center

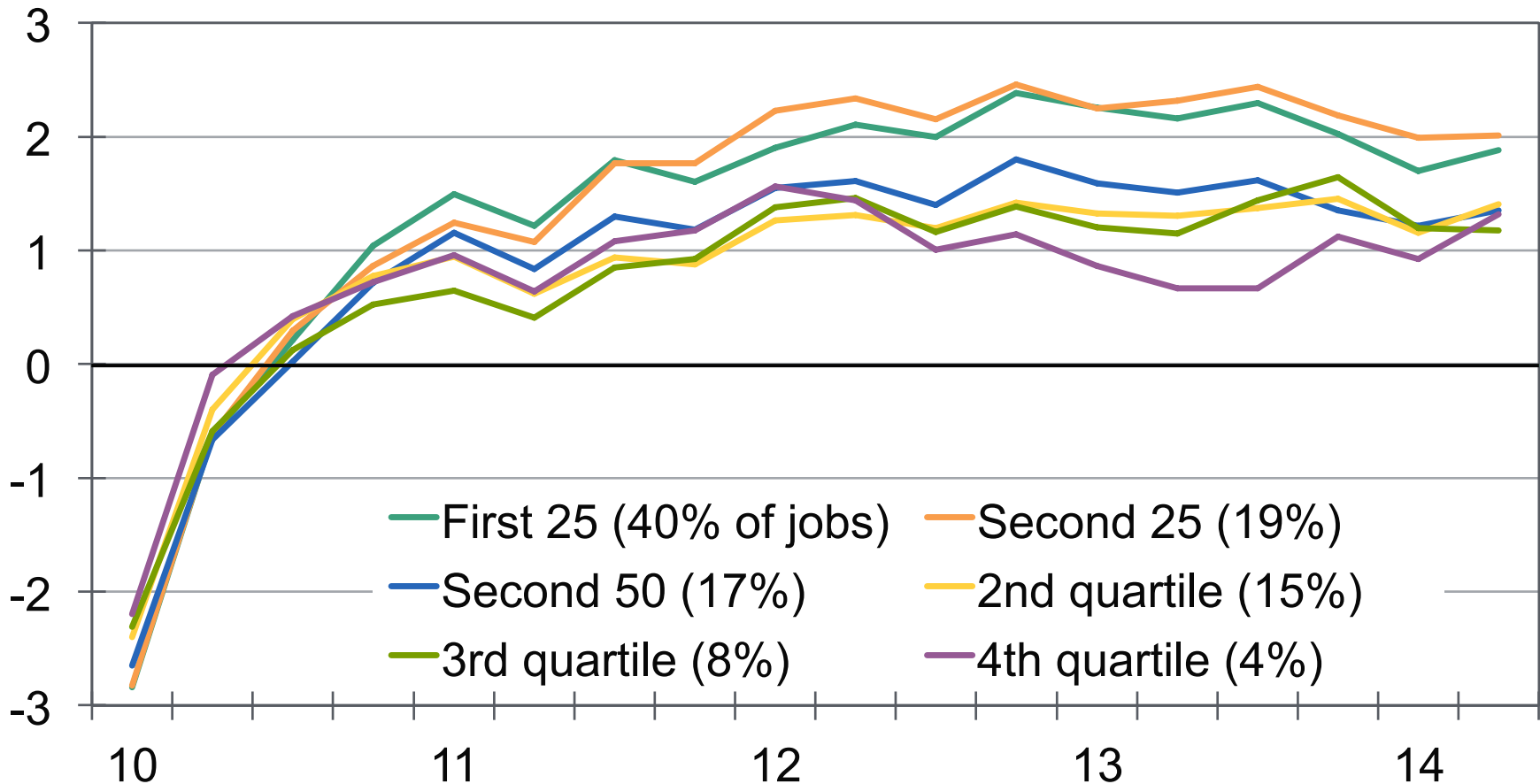
Total employment, % of last U.S. business cycle peak, 2014Q2



Sources: BLS, Moody's Analytics

Large Metro Areas Move Ahead...

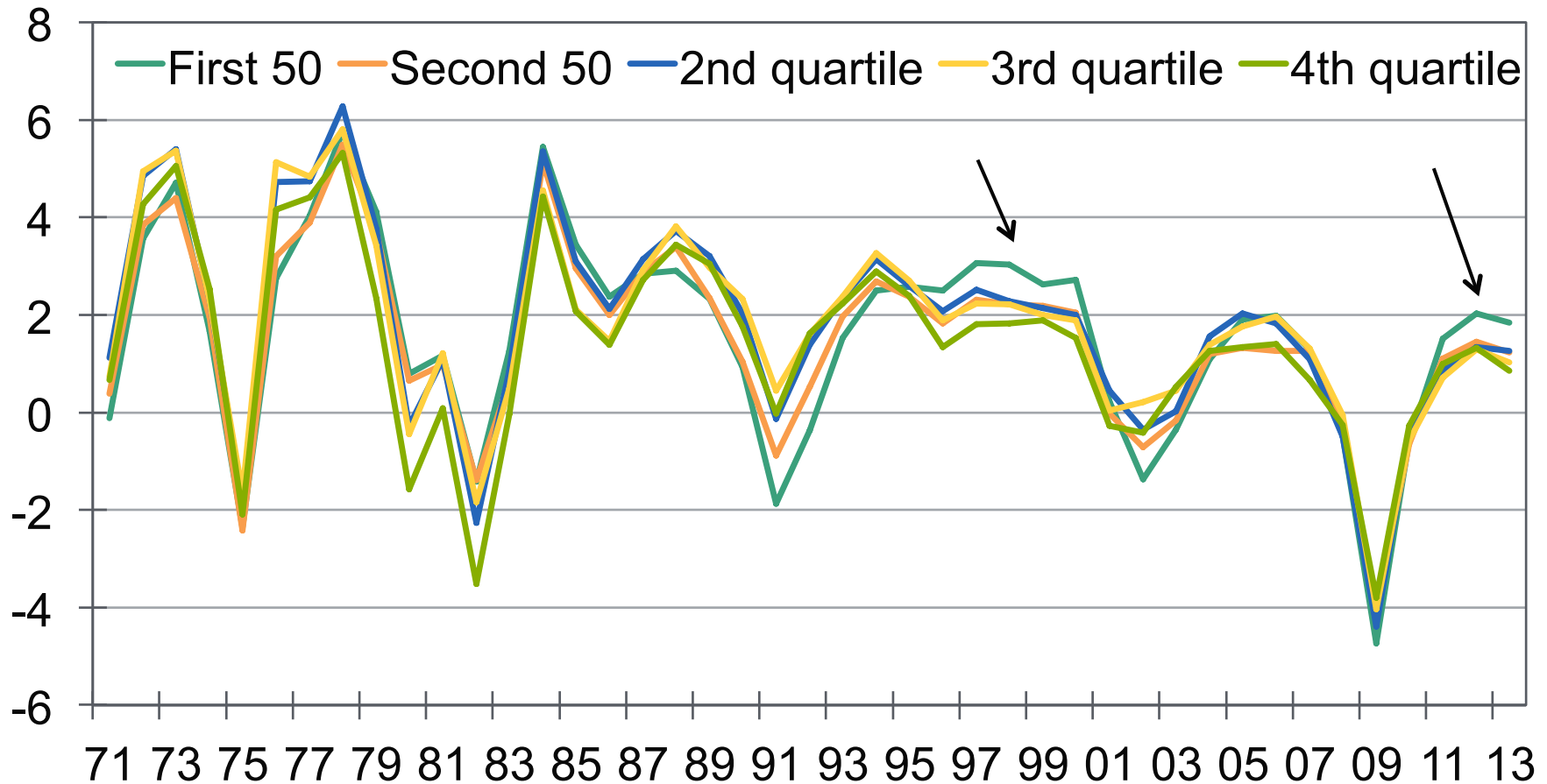
Employment, % change yr ago, metro areas by population



Sources: BLS, Census Bureau, Moody's Analytics

...Which Is a Rare Event

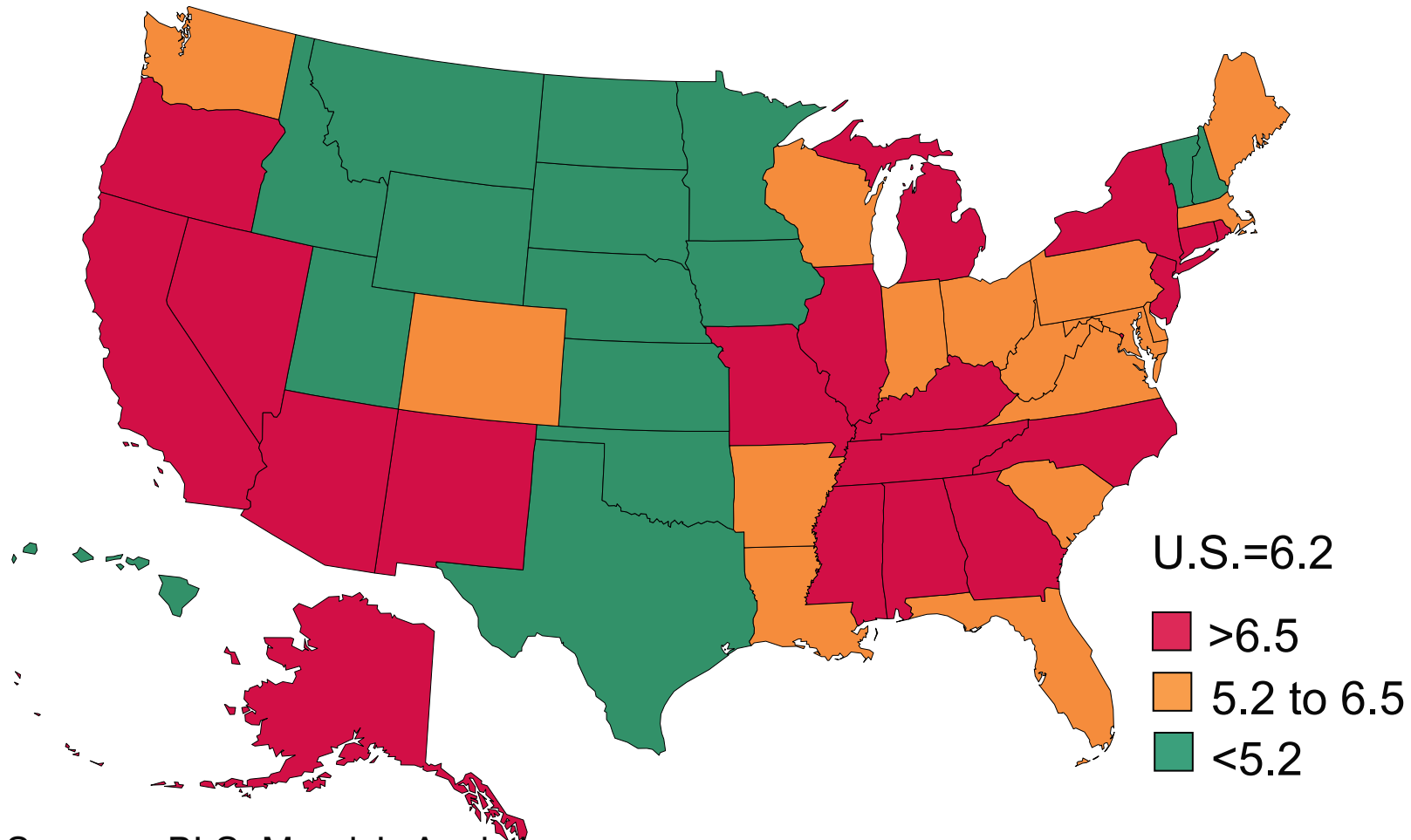
Employment, % change yr ago, metro area quartiles by population



Sources: BLS, Census Bureau, Moody's Analytics

Unemployment Rates Are Lowest in Midsection

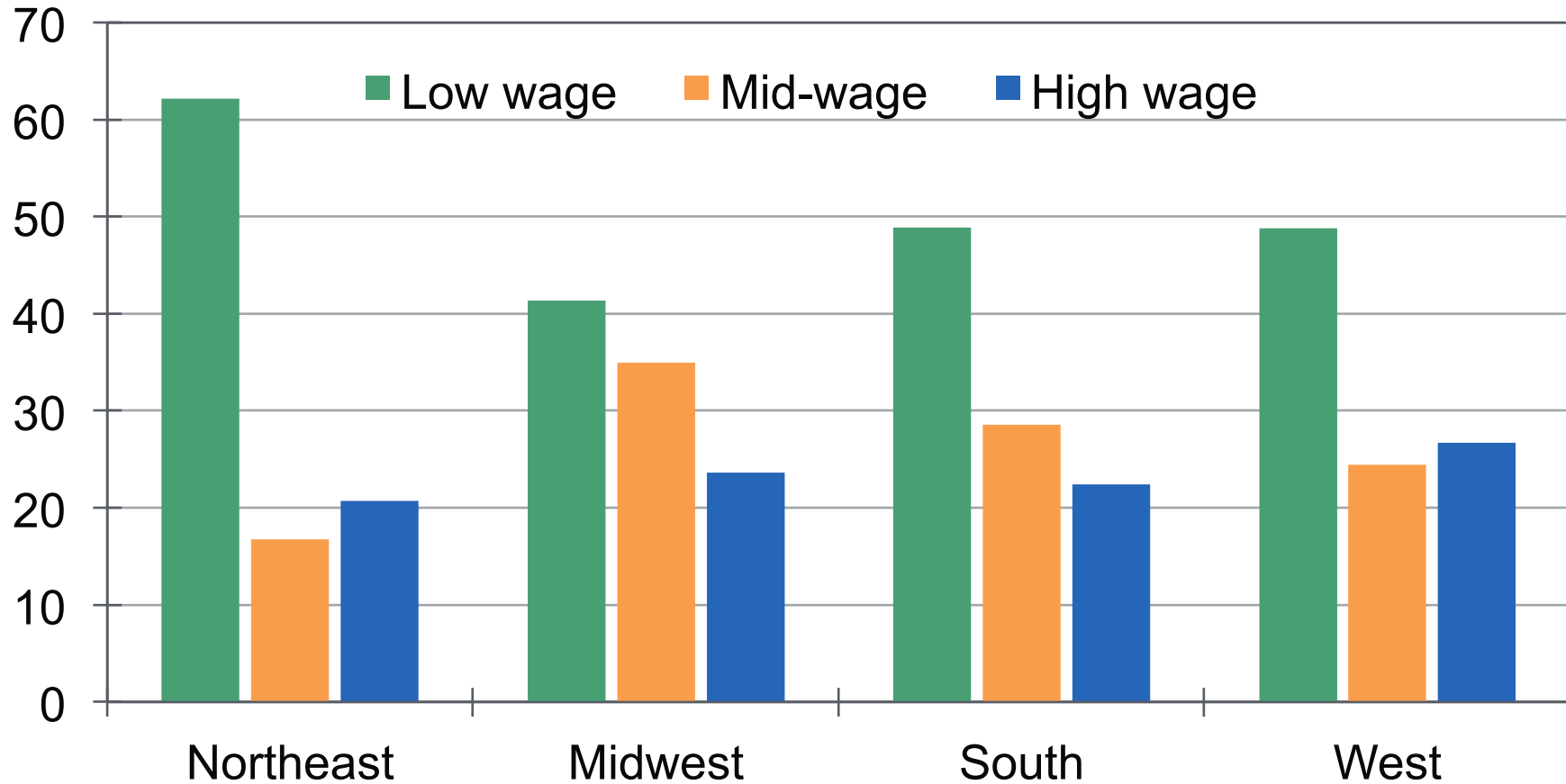
Unemployment rate, %, July 2014



Sources: BLS, Moody's Analytics

Low-Wage Growth Dominates in the Northeast

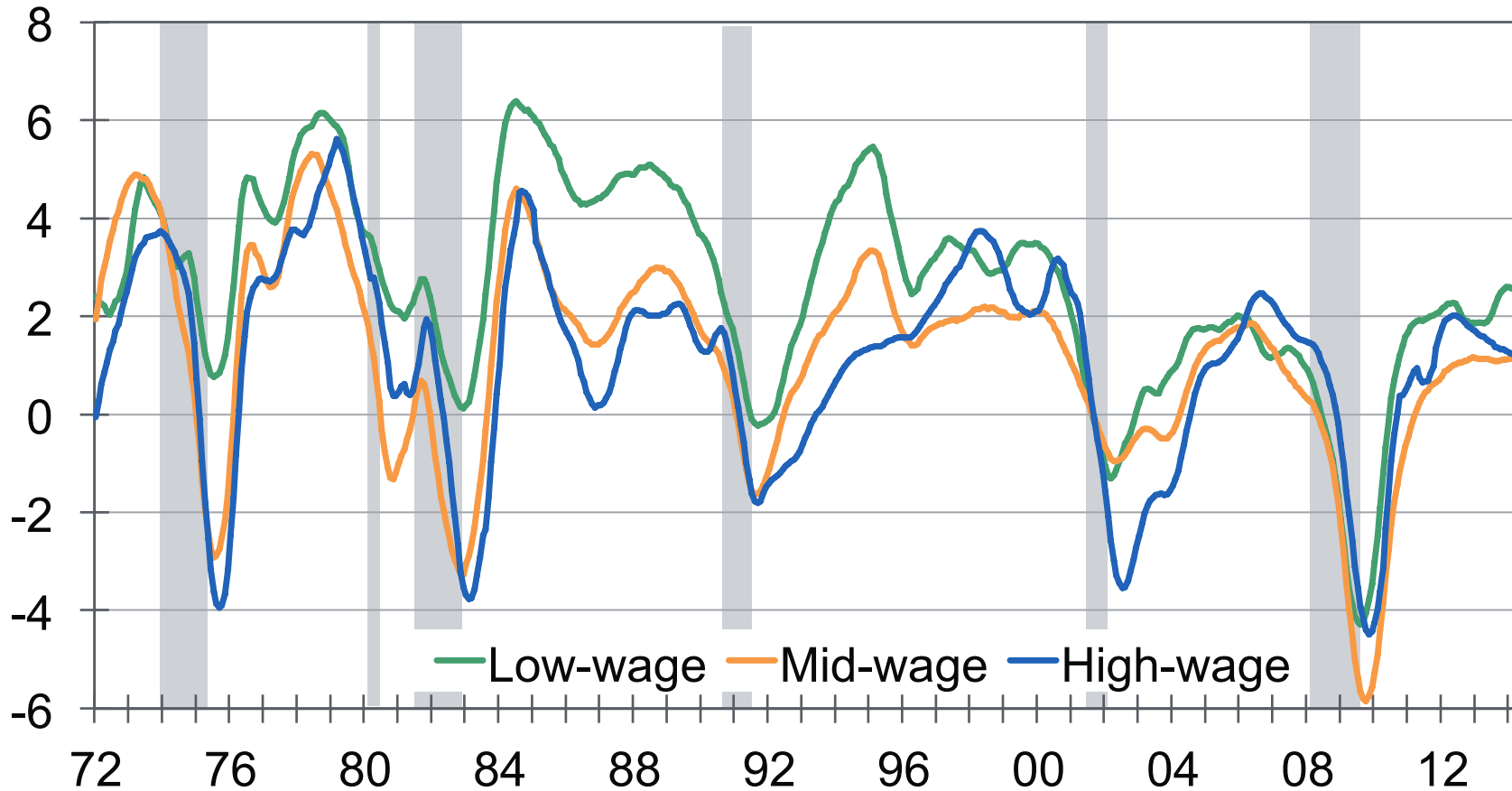
% of job gains since 2010Q1 by wage cohort



Sources: BLS, BEA, Moody's Analytics

Mid-Wage Jobs Coming Back Slowly

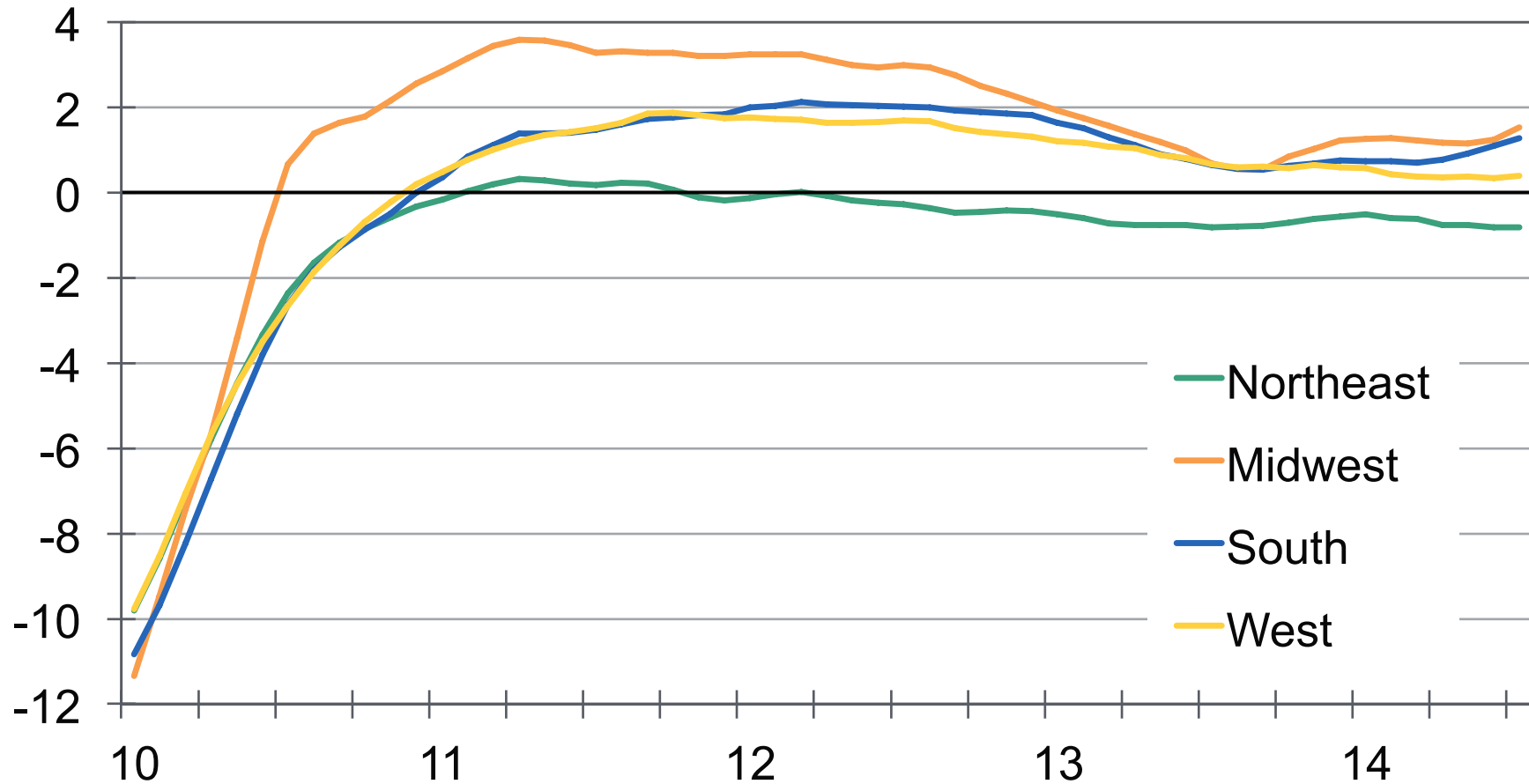
Employment growth by wage cohort, U.S., % change yr ago



Sources: BLS, BEA, Moody's Analytics

Rising Production Benefits the Midwest

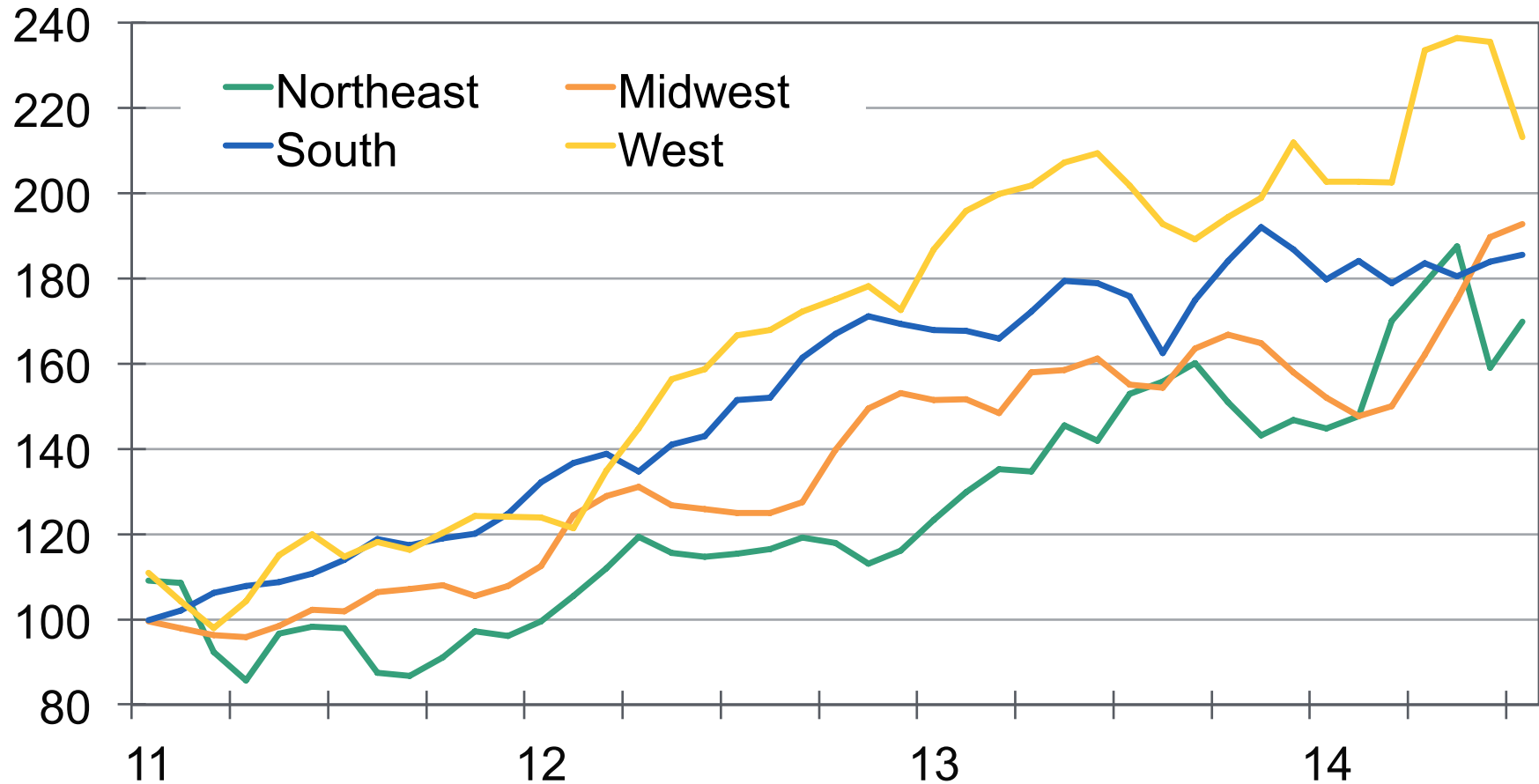
Manufacturing employment, % change yr ago, 3-mo MA



Sources: BLS, Moody's Analytics

Homebuilding Supports South and West

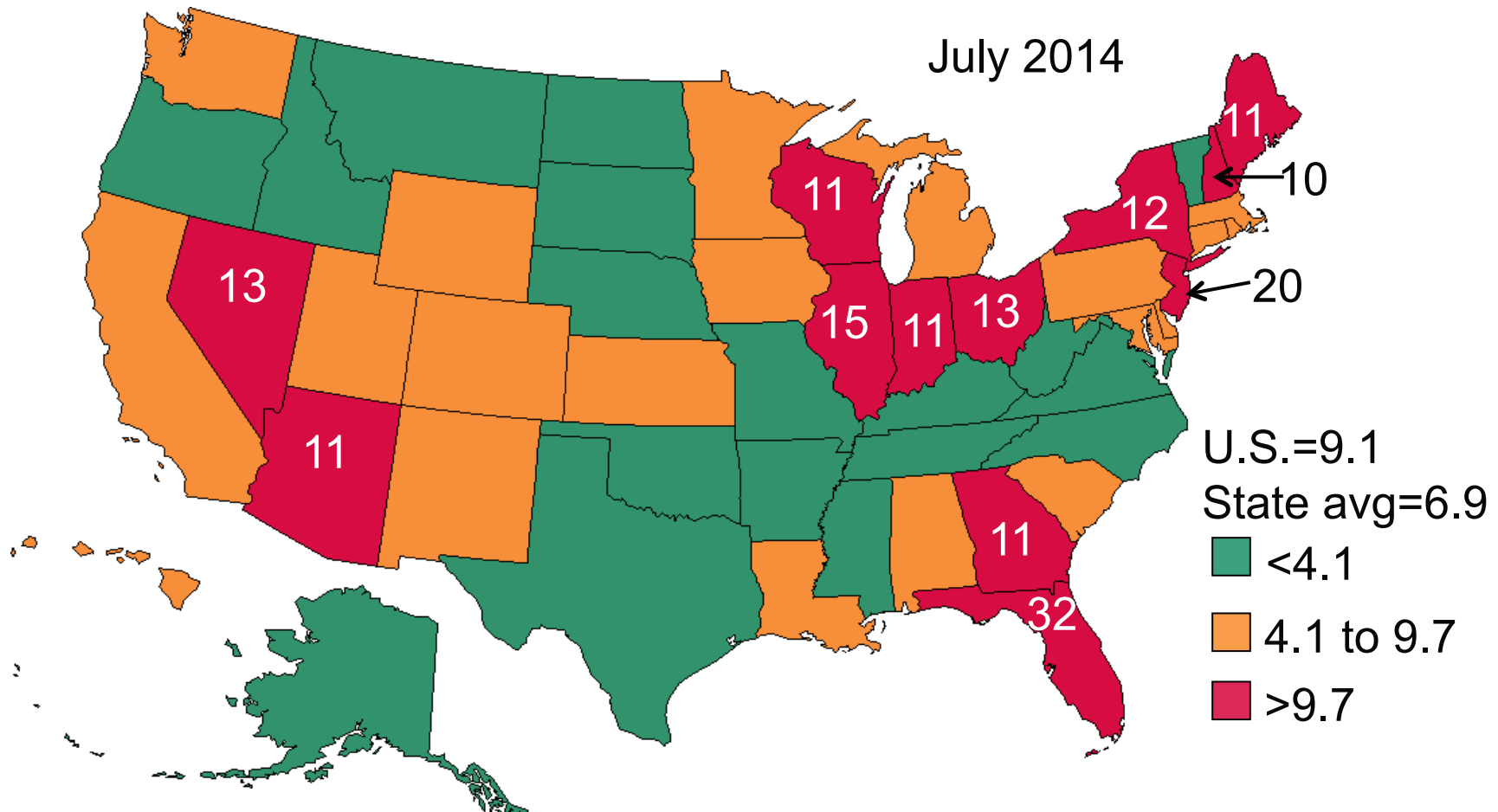
Residential construction permits, Jan 2011=100, 3-mo MA



Sources: BLS, Moody's Analytics

Foreclosure Inventories Are Concentrated

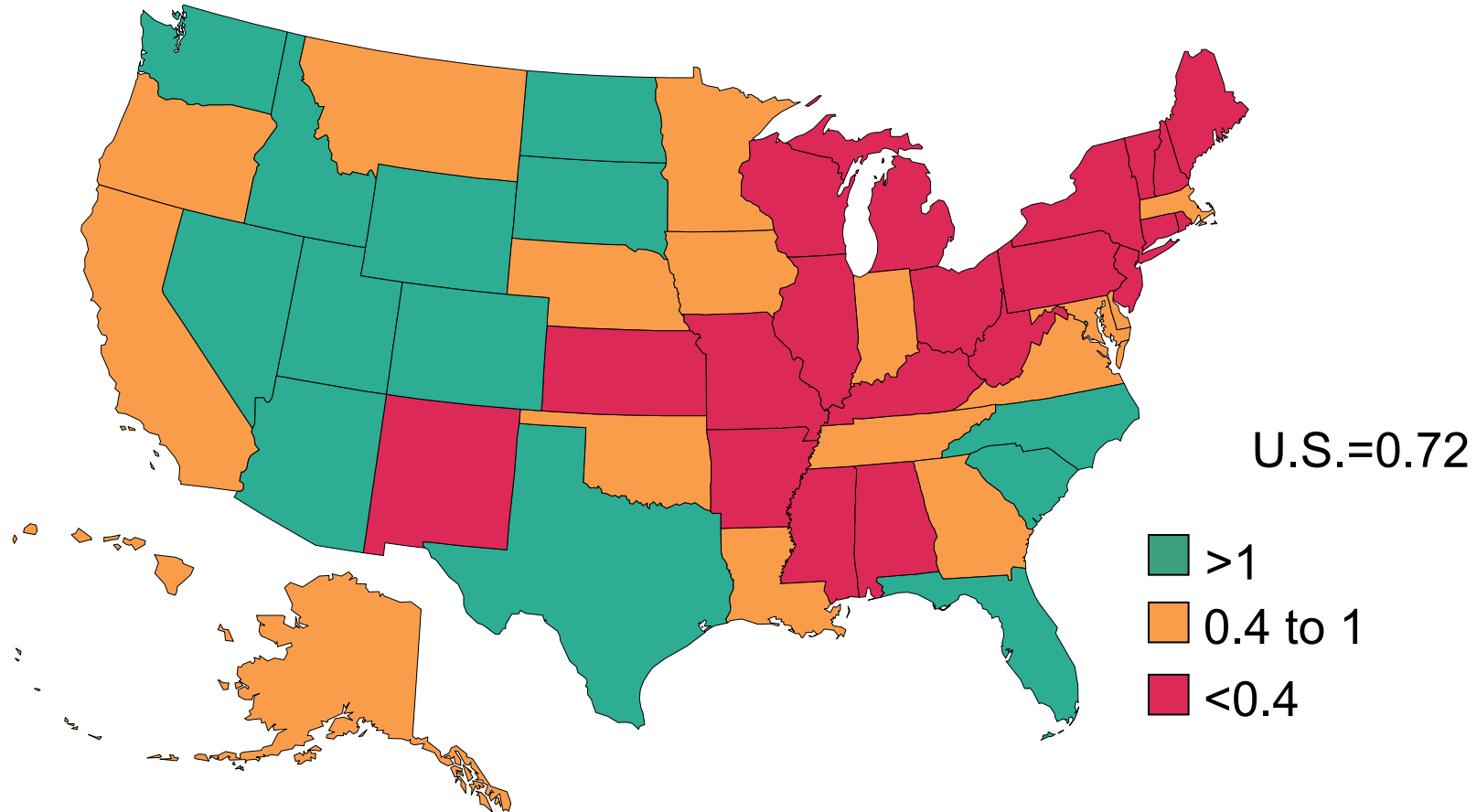
Total foreclosure inventories per 1,000 households



Sources: RealtyTrac, Moody's Analytics

West, Texas, Southeast Lead Population Gains...

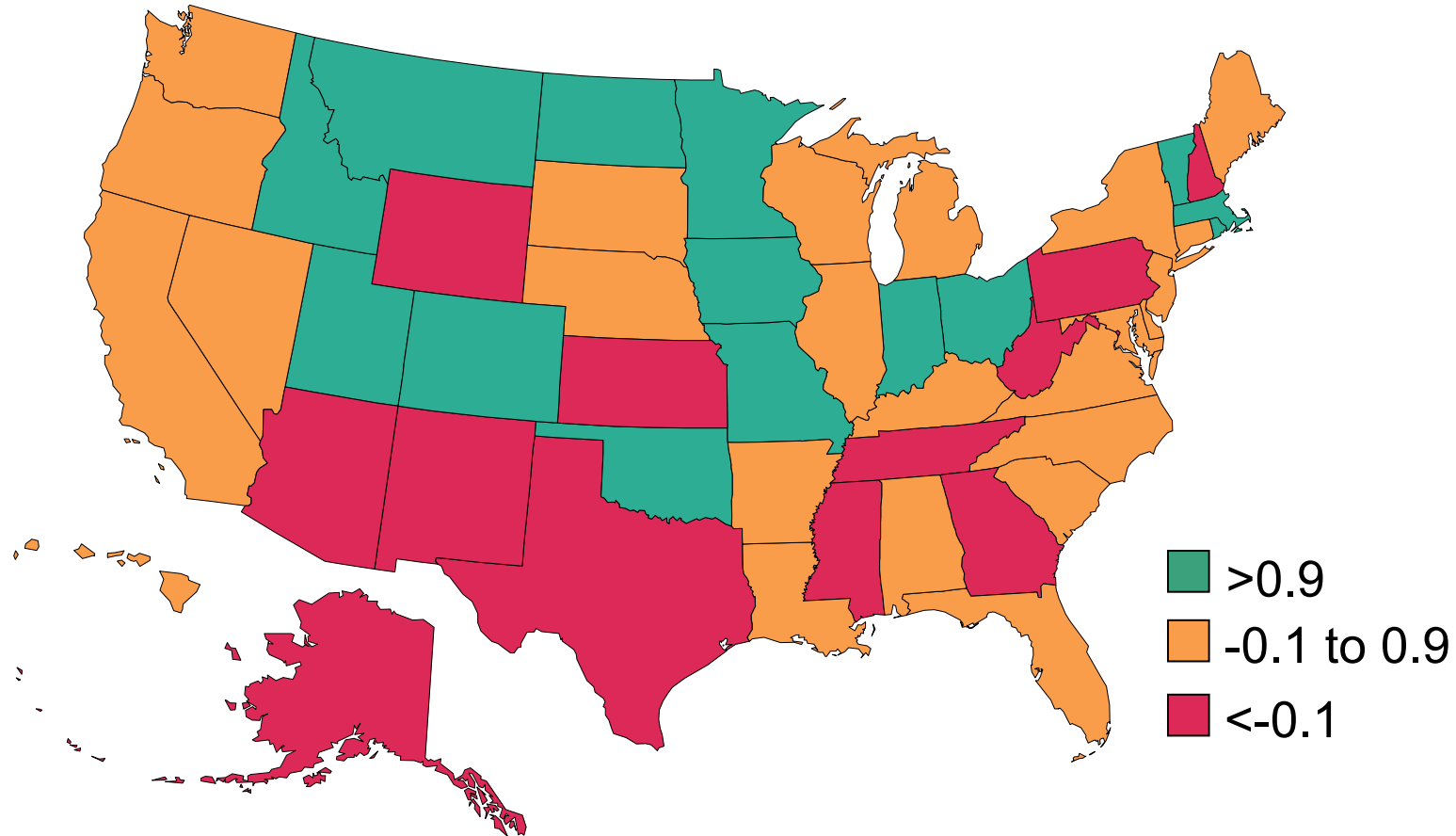
Population, July 1, 2013, % change yr ago



Sources: Census Bureau, Moody's Analytics

...But Still No Acceleration in the South

Population, 2013, change in growth rate from 2012 rate, ppt



Sources: Census Bureau, Moody's Analytics

United States
121 North Walnut Street
Suite 500
West Chester PA 19380
+1.610.235.5299

United Kingdom
One Canada Square
Canary Wharf
London E14 5FA
+44.20.7772.5454

Australia
Level 10
1 O'Connell Street
Sydney, NSW, 2000
Australia
+61.2.9270.8111

Prague
Washingtonova 17
110 00 Prague 1
Czech Republic
+420.22.422.2929



© 2014, Moody's Analytics, Inc. and/or its licensors and affiliates (together, "Moody's"). All rights reserved. ALL INFORMATION CONTAINED HEREIN IS PROTECTED BY COPYRIGHT LAW AND NONE OF SUCH INFORMATION MAY BE COPIED OR OTHERWISE REPRODUCED, REPACKAGED, FURTHER TRANSMITTED, TRANSFERRED, DISSEMINATED, REDISTRIBUTED OR RESOLD, OR STORED FOR SUBSEQUENT USE FOR ANY PURPOSE, IN WHOLE OR IN PART, IN ANY FORM OR MANNER OR BY ANY MEANS WHATSOEVER, BY ANY PERSON WITHOUT MOODY'S PRIOR WRITTEN CONSENT. All information contained herein is obtained by Moody's from sources believed by it to be accurate and reliable. Because of the possibility of human and mechanical error as well as other factors, however, all information contained herein is provided "AS IS" without warranty of any kind. Under no circumstances shall Moody's have any liability to any person or entity for (a) any loss or damage in whole or in part caused by, resulting from, or relating to, any error (negligent or otherwise) or other circumstance or contingency within or outside the control of Moody's or any of its directors, officers, employees or agents in connection with the procurement, collection, compilation, analysis, interpretation, communication, publication or delivery of any such information, or (b) any direct, indirect, special, consequential, compensatory or incidental damages whatsoever (including without limitation, lost profits), even if Moody's is advised in advance of the possibility of such damages, resulting from the use of or inability to use, any such information. The financial reporting, analysis, projections, observations, and other information contained herein are, and must be construed solely as, statements of opinion and not statements of fact or recommendations to purchase, sell, or hold any securities. NO WARRANTY, EXPRESS OR IMPLIED, AS TO THE ACCURACY, TIMELINESS, COMPLETENESS, MERCHANTABILITY OR FITNESS FOR ANY PARTICULAR PURPOSE OF ANY SUCH OPINION OR INFORMATION IS GIVEN OR MADE BY MOODY'S IN ANY FORM OR MANNER WHATSOEVER. Each opinion must be weighed solely as one factor in any investment decision made by or on behalf of any user of the information contained herein, and each such user must accordingly make its own study and evaluation prior to investing.