



>Welcome to Illinois!

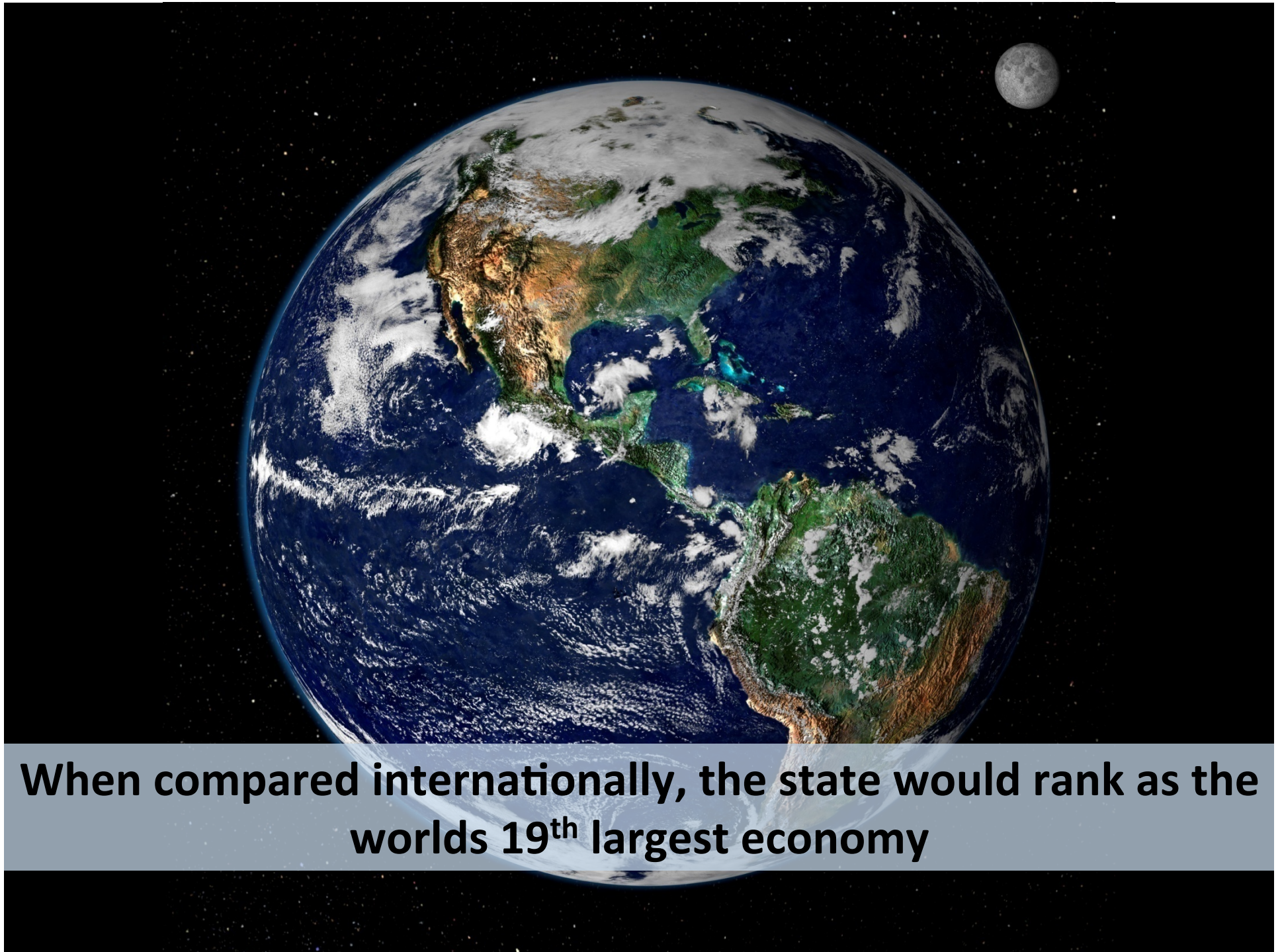
FTA Revenue Estimating and Tax  
Research Conference 2013



**Illinois has a population of 12.8 million,  
fifth largest in the country**



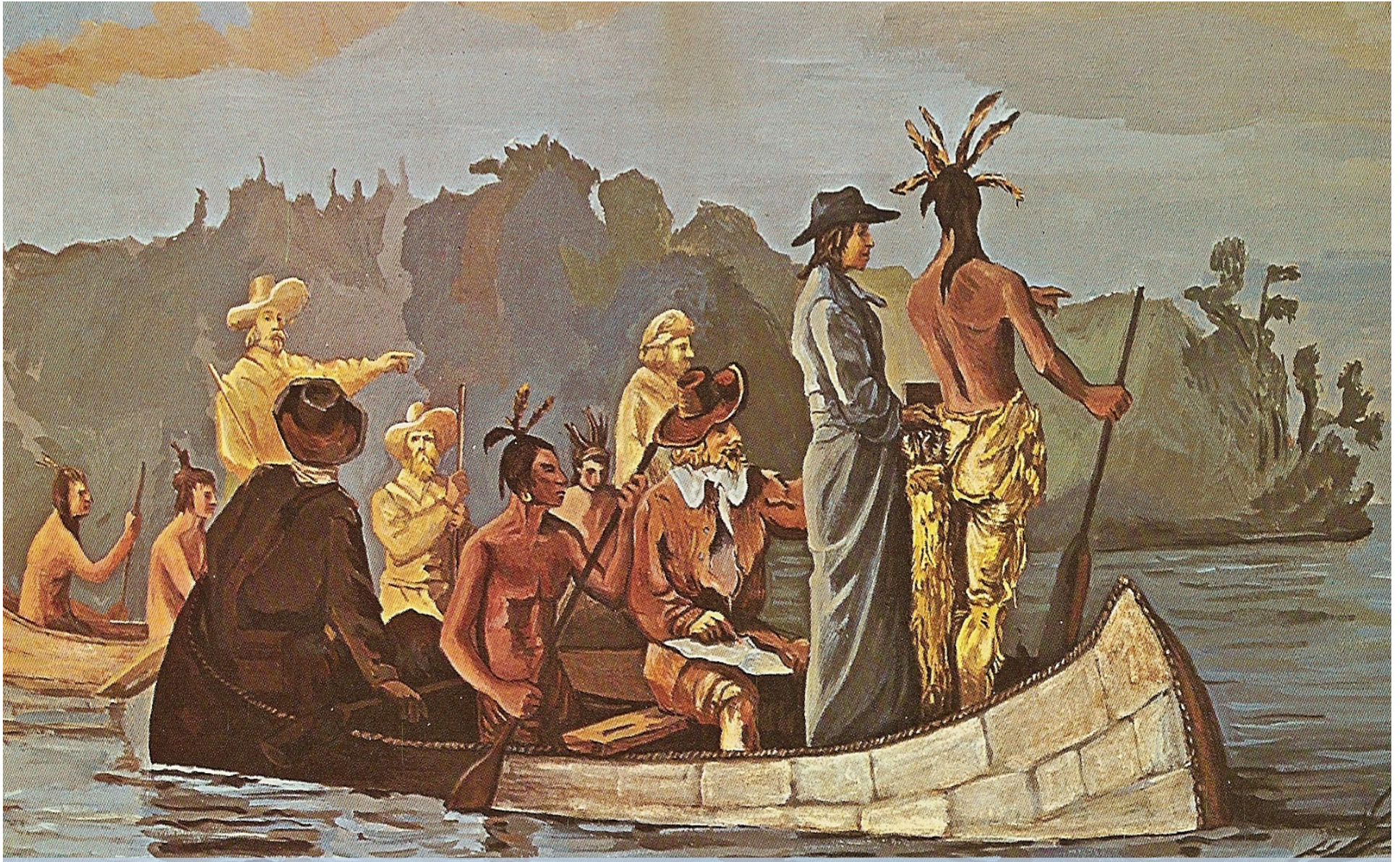
**Illinois is also the country's fifth largest economy,  
at \$644 billion in Gross State Product**



**When compared internationally, the state would rank as the worlds 19<sup>th</sup> largest economy**



**With over 65 million total passengers in 2011 (4<sup>th</sup> in the world) and flights to 60 international destinations (4<sup>th</sup> in the US), O' Hare International Airport is Illinois' connection to the world**



# Illinois History and Interesting Facts



**600 to 1400** – Native American establish a settlement at the Cahokia Mounds, One of the largest in North America

**1673** – Jacques Marquette and Louis Joliet explore along the Illinois River

**1818** – Illinois becomes the 21<sup>st</sup> State

**1839 to 1844** – The city of Nauvoo is founded and then quickly abandoned by the Mormons

**1861** – Abraham Lincoln becomes the 16<sup>th</sup> president of the United States



**Cahokia Mounds encompasses 3.5 square miles and 80 mound structures built by early Native American tribes. The area is designated as a UNESCO World Heritage Site.**





**The Illinois State Fair started in 1853 and continues to run to this day. A key attraction is a life-size sculpture of a dairy cow made out of 600 lbs. of butter**



**As the tale goes, on October 8<sup>th</sup> of 1871 a cow kicked over a lantern in the barn of Catherine O' Leary. The resulting blaze was the start of the Great Chicago Fire.**





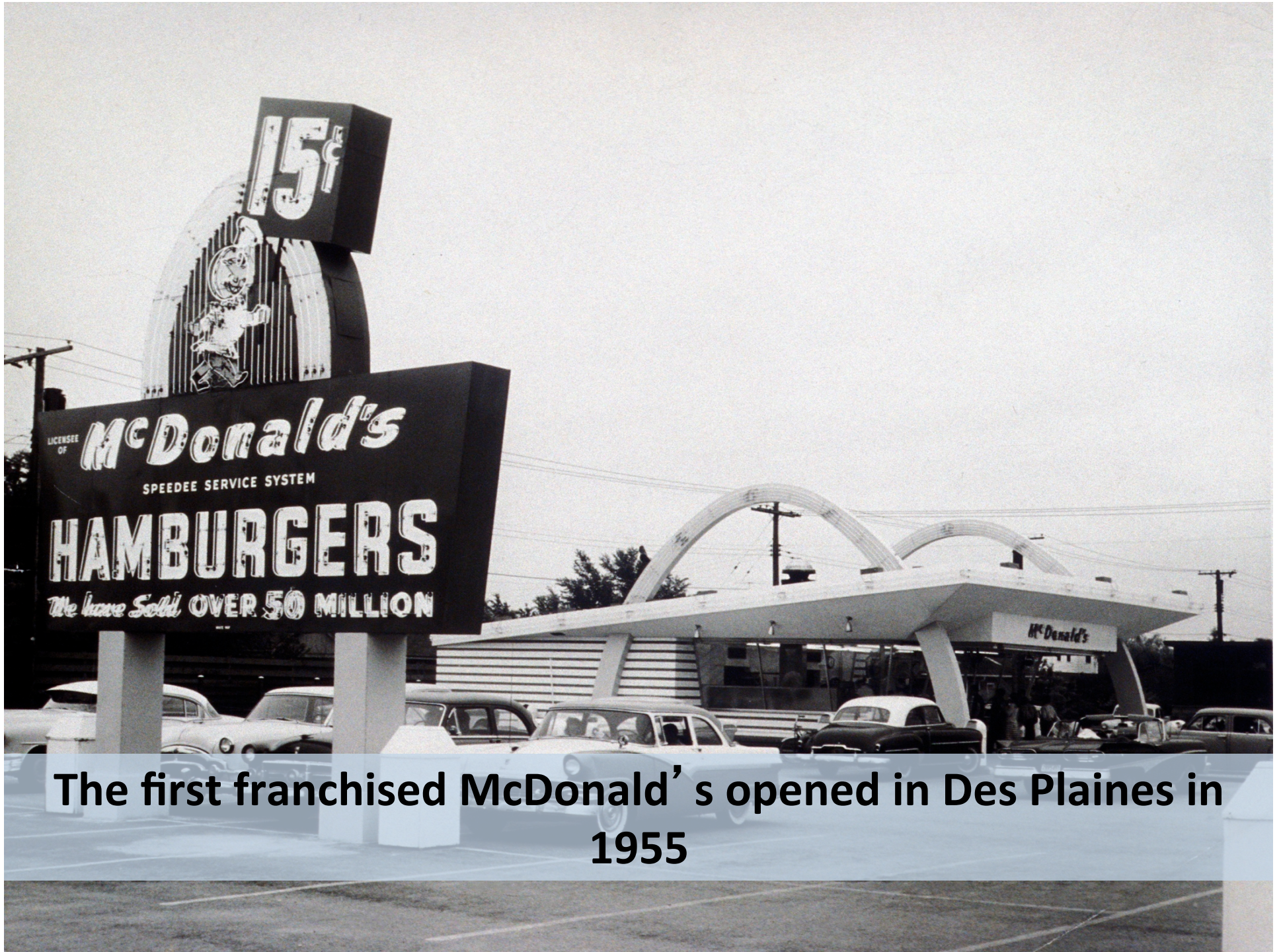
**In 1884, Chicago became home to the world's first metal framed skyscraper, the nine-story Home Insurance Building**



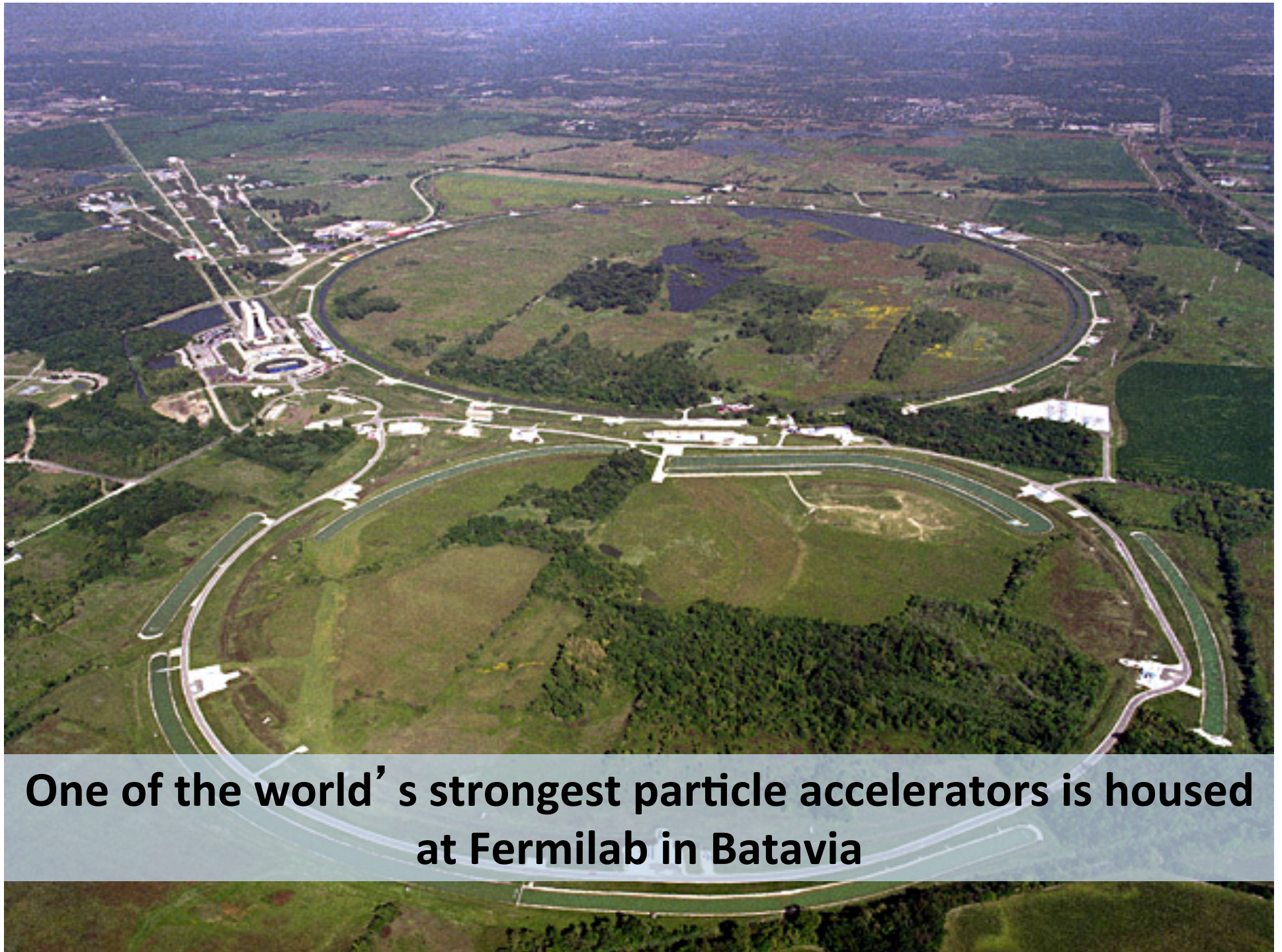
**Responding to a ban on serving ice cream sodas on Sunday, Evanston drug store owners started offering ice cream with syrup - creating the ice cream sundae in 1890.**



**Constructed in 1926, US Rte. 66 spanned 301 miles connecting Chicago to East St. Louis. Remaining portions of the route have been designated as national scenic byway.**



**The first franchised McDonald's opened in Des Plaines in 1955**

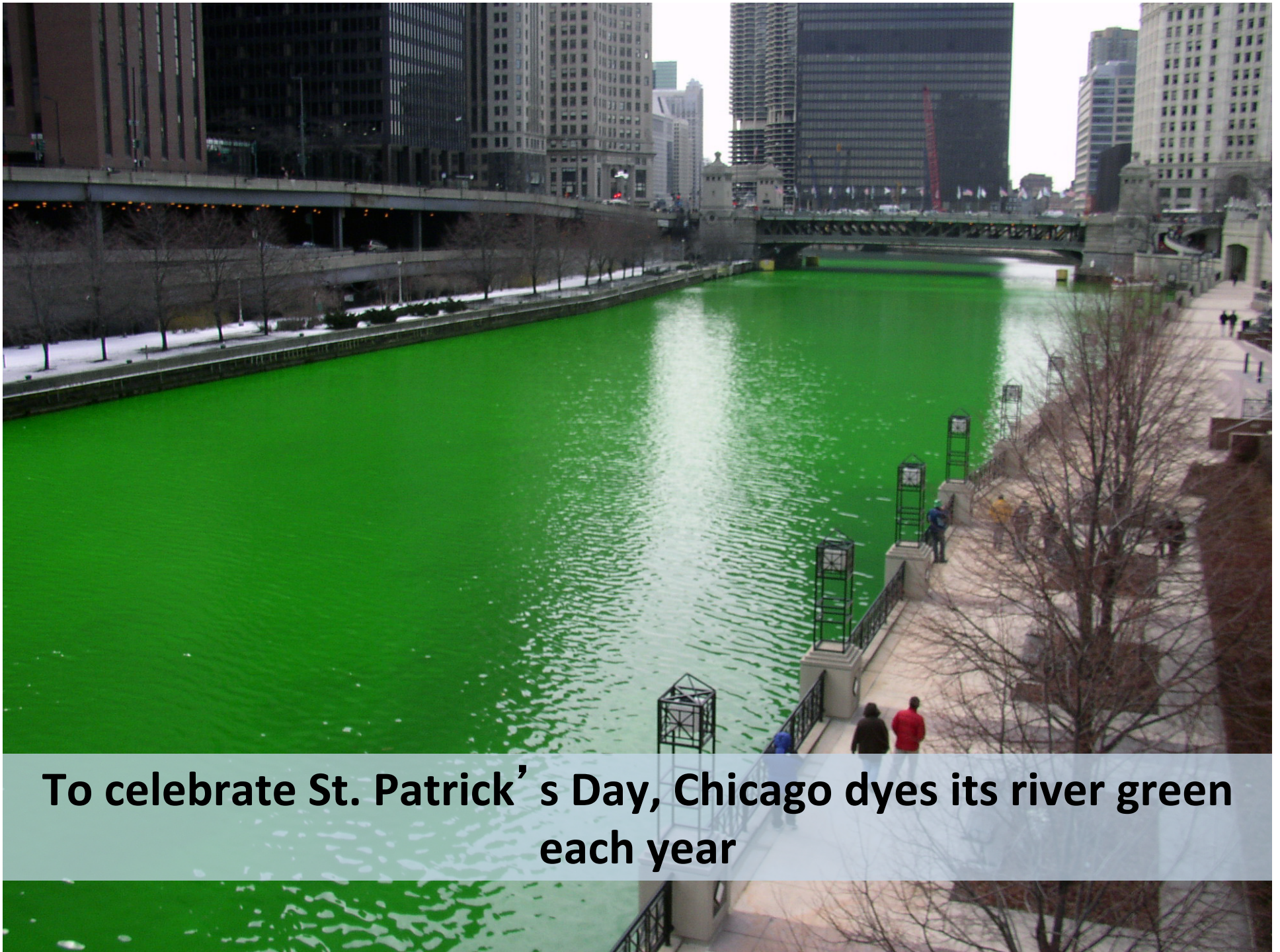


**One of the world's strongest particle accelerators is housed at Fermilab in Batavia**



**Illinois leads the nation in the production of pumpkin thanks in part to Morton, IL – ‘The Pumpkin Capital of the World’**





**To celebrate St. Patrick's Day, Chicago dyes its river green each year**



**Illinois has over 6,000 regional, county, municipal, and single purpose governments – more than any other state**

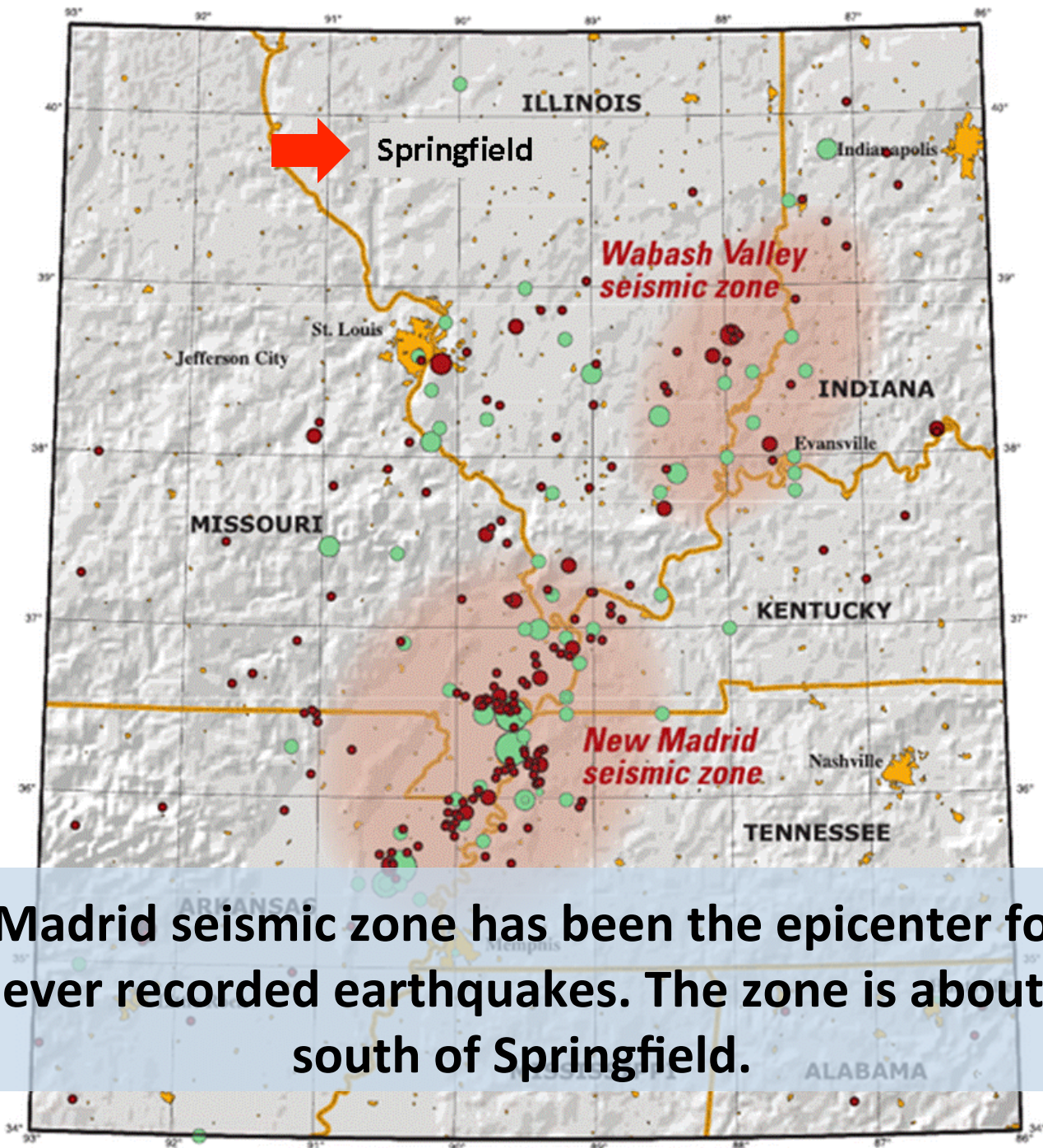
HOUSE CHAMBER



**Between 1818 – 1837, Illinois moved its capital from Kaskaskia to Vandalia and finally to Springfield**



# Introduction to Springfield, Illinois



The New Madrid seismic zone has been the epicenter for some of the worst ever recorded earthquakes. The zone is about 325 miles south of Springfield.

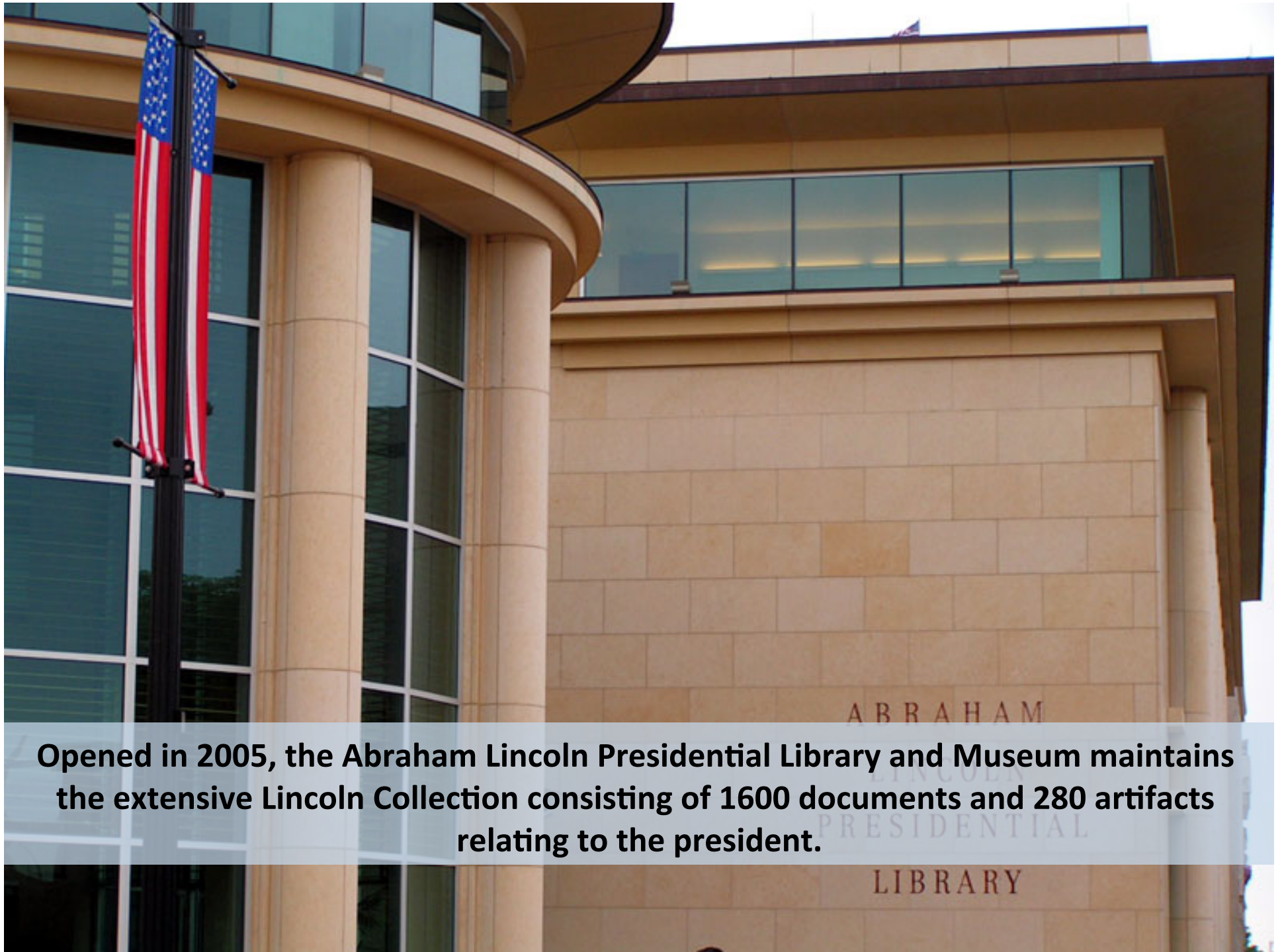


**Illinois has had six capitol buildings since it became a state in 1818. The current capitol building is the tallest (at 361 ft.) of any traditional style capitol building in the country.**



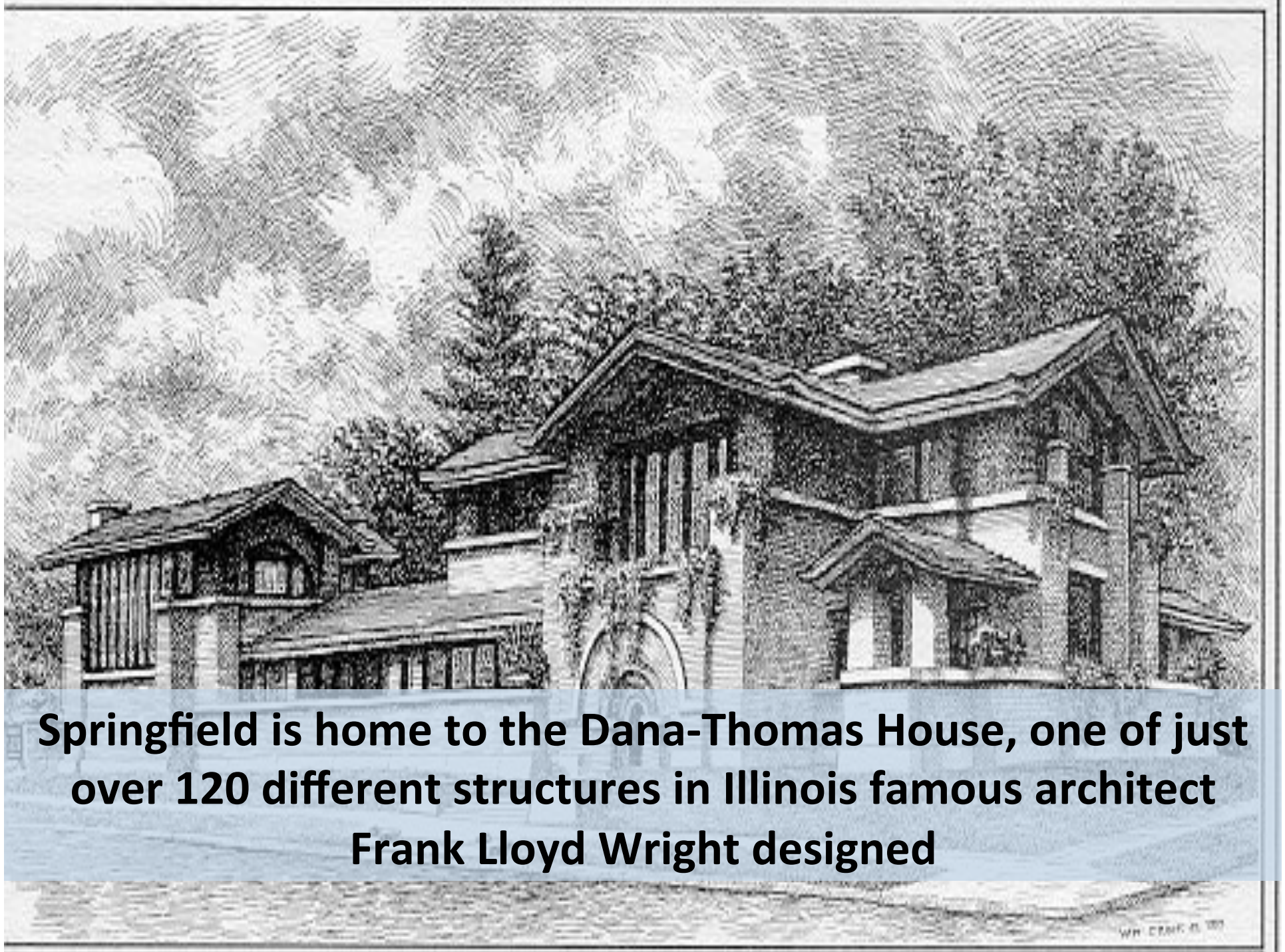


**President Abraham Lincoln lived in Springfield for much of his early life. Plan on visiting Lincoln's home, law office, and tomb next year.**



**Opened in 2005, the Abraham Lincoln Presidential Library and Museum maintains the extensive Lincoln Collection consisting of 1600 documents and 280 artifacts relating to the president.**





**Springfield is home to the Dana-Thomas House, one of just over 120 different structures in Illinois famous architect Frank Lloyd Wright designed**



**There are 669 golf courses in Illinois and 12 in the Springfield area**



While in Springfield, try some of the state's best BBQ by visiting the Doctor of BBQ at 5<sup>th</sup> and Stanford




**The Horse Shoe sandwich is a local delicacy of Springfield. The sandwich is made of toasted bread, generally hamburger or pork loin, french fries and a special recipe cheese sauce. No trip to Springfield is complete without trying one!**



**Thank You!**

And we look forward to welcoming you next year!



**FTA Revenue Estimating and Tax Research Conference**  
October 5 – 9, 2013  
The Hilton  
Springfield, Illinois